

MINI EXCAVATOR



EXCAVATOR SKID STEER LOADER LAWN MOWER

INFRONT

SHANDONG INFRONT MACHINERY CO., LTD.

AUTHORIZED DEALERSHIP

PT. PRODEMA GROUP INDONESIA

Tel: +62 877 6971 5224

Email: hello@prodemaindonesia.com

Add: Jl. Patih Jelantik, Komp. Ruko Kuta Galeria, RS.08
Kuta, Badung, Bali. 80361

Note: Due to technological upgrades, the actual product may be different from what is shown. Diagram, photos and information are for reference only.



PRODUCT CATALOG

COMPANY PROFILE

Shandong Infront Machinery Co., Ltd. is a professional international manufacturer and exporter focusing on construction machinery based on domestic and foreign e-commerce platforms. Infront was established in 2001. The company covers an area of 100 acres and a construction area of 35,000 square meters. R&D center 2,000 square meters. The company currently has more than 500 employees, including 86 senior technical personnel. Fixed assets reached 460 million yuan. 20 years of development have given Infront strong production and R&D capabilities. Infront has import and export rights and specializes in cross-border online sales of construction machinery and related spare parts. We are located in Jining City, Shandong Province. Jining is one of the largest construction machinery production bases in China. Komatsu and Shantui factories are also located here.

Our main products are mini excavators, excavators, loaders, and skid steer loaders, roller, and bulldozers. Mini excavators have become the star products of our company. All our products comply with international quality standards and are highly appreciated in different markets around the world. The main markets cover North America, South America, Europe, Middle East and Africa, Australia, Southeast Asia and other countries.



POWERFUL

The most powerful company born in the machinery manufacturing base.



FIRST

The first leading companies in the international machinery trade.



ADVANCED

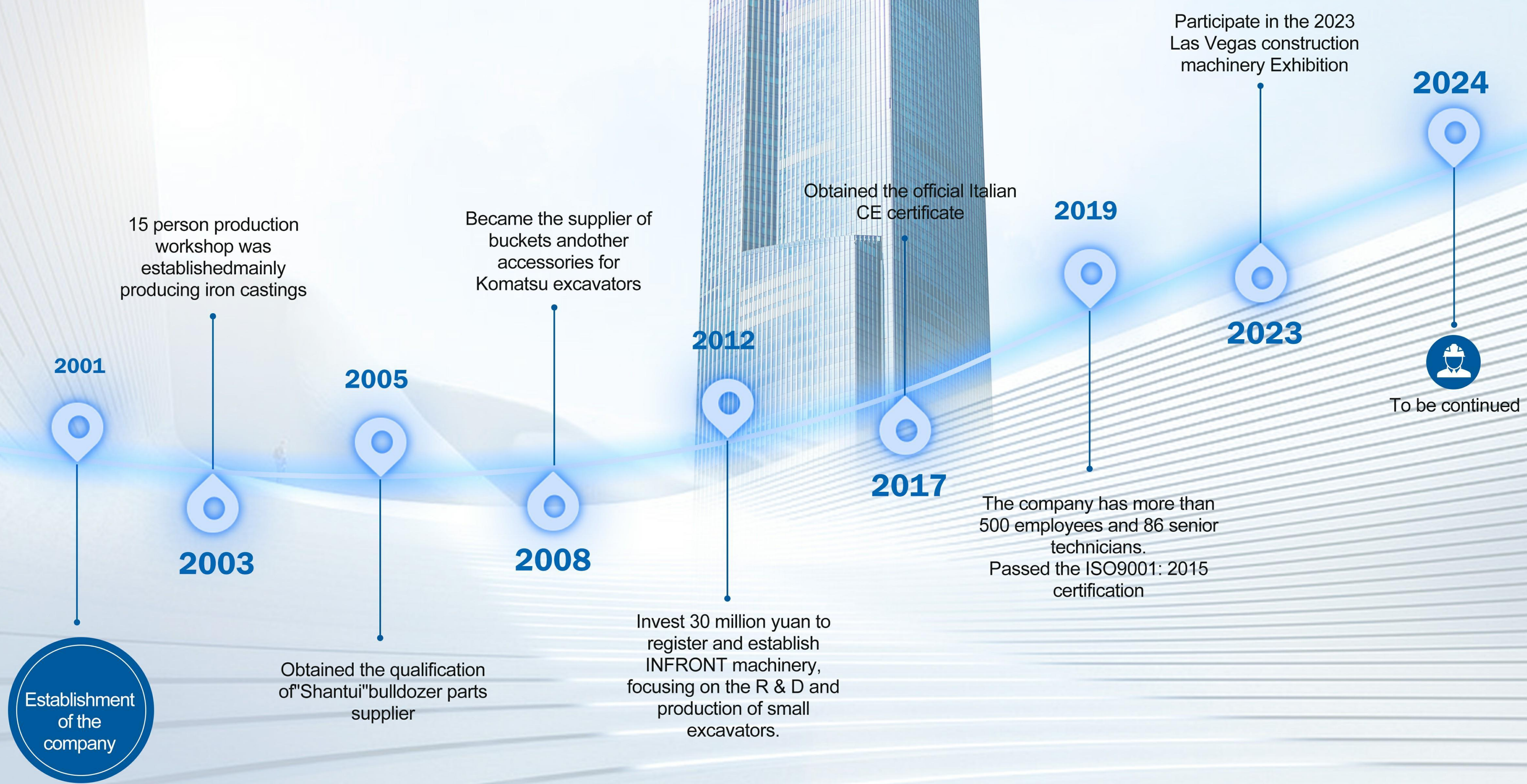
Mature design and manufacturing technology, while adding advanced intelligent technology.

2001
SET UP

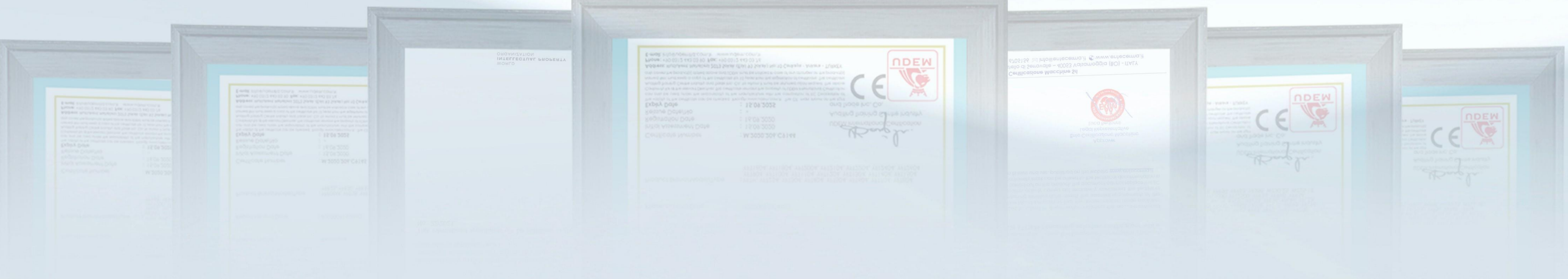
460
ASSETS 460 MILLION RMB

500
EMPLOYEES

ENTERPRISE HISTORY



CERTIFICATIONS



YFE08

MINI EXCAVATOR



UPPER ARM CYLINDER

The hydraulic cylinder is above the boom and is not easily bumped during operation, thus protecting the life of the cylinder.



WITH HYDRAULIC SELF-LOCKING FUNCTION

Focusing on ensuring safety while improving equipment operating performance and stability



STANDARD SIDE SWING

Standard side swing, the machine is flexible and compact, and can operate in narrow spaces without dead angles



PARAMETER

Rated power	6.5KW
Bucket capacity	0.013m
Engine model	Gasoline engine
Operating weight	620kg/1367lbs
Maximum digging force	8KN
Pump type	Double gear pump
Set working pressure	25Mpa
Slewing speed	7Rpm
Travel speed	3Km/h
Gradeability	25°

PARAMETER

Side swing angle	70° left and right
Maximum digging distance	2100mm/83inch
Maximum digging depth	1200mm/47inch
Maximum digging height	1350mm/53inch
Maximum dumping height	1300mm/51inch
Track width (carport installation)	690(800)mm/27(31)inch
Total height (carport installation)	1300(2080)mm/51(82)inch
Total length	2330mm/92inch
Track ground contact length	1140mm/45inch
Outer diameter of wooden box packaging	2450*800*1500mm/96*31*59inch

YFE10

MINI EXCAVATOR



SEAT

Comfortable seats filter out vibrations and bumps, reduce fatigue, and protect the lumbar spine



JOYSTICK

Mechanical operation, simple structure, low failure rate.



ENGINE

It uses an international brand engine and a rear-lift integral hood, which makes it easy for users to complete daily maintenance by themselves, saving time and maintenance costs.



ADVANTAGE

Fully open, integrated front and rear hood design provides spacious maintenance space.

Maintenance points are centralized and one-stop maintenance is convenient and fast.

Long-lasting anti-wear hydraulic oil extends the maintenance cycle and saves maintenance costs by 42%.

PARAMETER

L*W*H	2600*860*1480mm
Bulldozer blade width (retracted/extended)	860mm
Bulldozer blade height	210mm
Center distance of tracks	680mm
Standard track shoe width	180mm
Platform ground clearance	370mm
Standard bucket width (with/without side teeth)	360(310)mm
Total track length	1200mm
Wheel spacing	670mm
Maximum digging height	2580mm
Maximum dumping height	1830mm
Maximum digging depth	2000mm
Maximum vertical arm digging depth	1600mm
Maximum digging distance	2850mm

PARAMETER

Minimum front swing radius	1290mm
Maximum digging ground distance	2700mm
Maximum bulldozing height	260mm
Maximum bulldozing depth	190mm
Operating weight	1000kg
Bucket capacity	0.022m ³
Engine model	192FA
Displacement	0.499L(cc)
Rated power	8.2KW/rpm
Slewing speed	11r/min
Gradability	25(30)%(°)
Ground pressure	0.35kpa
Bucket digging force	6.5KN
Fuel tank capacity	5.5L

YFE12

MINI EXCAVATOR



CARPORT

Optional carport and cab

OPERATION

Two options: mechanical operation and hydraulic operation

TAILLESS DESIGN

360 degree rotation for use, higher efficiency

TRACK

There are reinforced fibers in the all-rubber tracks, and the steel gears rotate to provide strong grip.

PARAMETER

Engine	KOOP192/Kubota D722
Power	8.6KW/10.2KW
Operating weight	1500KG
Bucket capacity	0.02m ³
Track width	180mm
Track length	1220mm
Bucket width	416mm
Digging height	2645mm
Digging depth	1600mm
Transport length	2902mm



PARAMETER

Unloading height	1825mm
Overall vehicle height	2193mm
Ground clearance	380mm
Wheel width	760mm
Chassis length	1430mm
Ground digging radius	3024mm
Slewing radius	1142mm
Bulldozer lift height	149mm
Overall machine dimensions	2902*940*2193mm
Chassis width	940mm

YFE12

MINI EXCAVATOR



BODY MATERIA

All structural parts are carefully processed through processes such as shot blasting, pickling, and baking, with high surface gloss and strong paint film adhesion.



OPERATING HANDLE

Two operating modes, mechanical operation and pilot operation are available.



FOUR-LEGGED CARPORT

Beautiful and durable four-legged carport, strong corrosion resistance, strong and durable without deformation



PARAMETER

Max digging depth	1700mm
Max digging radius	3030mm
Mini turning radius	1290mm
Platform clearance to ground	370mm
Swing angle	360°
Climbing gradient	30°
Walking speed	2.5km/h
Bucket digging force	11.5KN
Hydraulic system press	16MPa

PARAMETER

Engine(customized)	Youpu 192/KOOP 192F/Briggs&Stratton
Power	8kw/7.6kw/13.5PH
Cylinder pump valve (customized)	Warranty 1 years
Bucket capacity	0.03CBM
Rotation speed	11r/min
Overall dimension(L*W*H)	2870mm*950mm*2030mm
Crawler grounding length	1200mm
Crawler width	180mm
Max digging height	2580mm







YFE12

MINI EXCAVATOR



PARAMETER

Digging bucket capacity	0.025cbm/120kg
Digging bucket width	350mm
Engine	KOOP
Rated power	8.6kw/2200/r/min
Hydraulic pump pressure	16Mpa
Hydraulic oil tank	16.5L
Diesel oil tank	8L
Arm digging force	4.6Kn
Bucket digging force	7.2Kn

CARPORT	SEAT	OIL PIPE	HYDRAULIC CYLINDER	HIGH CAPACITY	SOUNDPROOF
					
Two-in-one carport + anti-rollover functional rack	Seat belt design for safer operation	Steel wire braided high pressure hose	Each hydraulic cylinder has its own number.	Enlarged 10L diesel tank, extra long battery life.	Built-in sound insulation cotton, good noise reduction effect.



PARAMETER

Electric pressure	12V
Electrick power	5W
Walking speed	2.2km/h
Overall dimension(LxWxH)	2876x850x1535 mm
Platform ground clearance	385 mm
Platform back turning radius	800 mm
Track width	180 mm
Chassis ground clearance	132 mm
Max. Digging height	2550 mm

YFE13

MINI EXCAVATOR



PARAMETER

Operating weight	1300kg
Bucket capacity	0.018m ³
Engine model	KOOP 292
Engine power	15kW
Overall length (transporting)	2870mm
Overall width (transporting)	934mm
Overall height (transporting)	2110mm
Number of track wheels	4 pieces



CORE COMPONENTS

Core components such as hydraulic pumps, engines, hydraulic motors, etc. are internationally renowned brands, which directly determine the life and working efficiency of the excavator.



OPERATING SYSTEM

The ergonomically designed hydraulic joystick requires minimal operating force, making continuous work less tiring and ensuring stable operation.



HYDRAULIC OIL PIPE

In order to extend the service life of the oil pipe, the entire vehicle hydraulic oil pipe is fully wrapped with leather to prevent aging, wear and oil leakage

CONFIGURATION

- The machine body is compact and flexible, with rubber tracks with low ground pressure and zero tail swing, which can operate in narrow spaces.
- Select international brand engines, meet Euro V and EPA standards, and have guaranteed after-sales service.
- Foot-operated shovel and crushing control system. Can install large arm side swing (left and right swing arms are 60 degrees each).
- It can be customized according to personal needs, and cabs, air conditioners and heaters can be added to ensure trouble-free operation around the clock.



PARAMETER

Track width	180mm
Counterweight ground clearance	366mm
Minimum ground clearance	197mm
Wheel spacing	883mm
Slewing speed	9r/min
Fuel tank capacity	7.3L
Hydraulic tank capacity	10.9L
Vehicle pressure	18MPa

YFE15

MINI EXCAVATOR



PARAMETER

Model	15
Operation weight	1500kg
Engine (customized)	RATO/KOOP/Briggs & Stratton
Power	8.6kw/7.6kw/15PH
Hydraulic cylinder, pump, valve (customized)	Warranty years
Bucket capacity	0.03CEM
Rotation speed	11r/min
Overall dimensions (L:*W:*H)	2950mm+1060mm*2250mm/2285mm
Crawler growing length	1200mm
Crawler width	180mm
Maximum digging height	2580mm
Maximum discharge height	1745mm

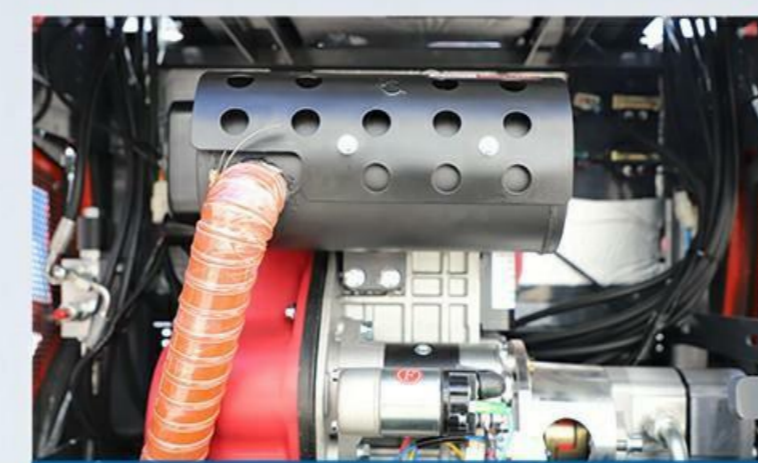


PARAMETER

Maximum digging depth	1700mm
Maximum digging radius	3030mm
Minimum turning radius	1290mm
Platform clearance to ground	370mm
Swing angle	360°
Climbing gradient	30°
Bulldozer maximum depth	170mm
Bulldozer maximum raising height	240mm
Walking speed	2.5km/h
Bucket digging force	11.5KN
Hydraulic system press	16MPa

YFE15

MINI EXCAVATOR



ENGINE

Higher quality, strong power, energy-saving and environmentally friendly.



SOUNDPROOF COTTON

Built-in insulation cotton prevents direct heat from the hood.



JOYSTICK

Comfortable seat + hydraulic pilot control.



TRAVEL MOTOR

It can withstand heavy load and overload, and has good safety and stability.



PARAMETER

Operating weight	1500kg
Model	Koop/Briggs & Stratton/KUBOTA(482/D722)
POWER	12hp/13.5hp/13.9hp
Operating pressure	22mpa
(SAE)bucket capacity	45°
Travel speed	2.2-4.3km/h
Length	2600mm
Width	950mm
Max.digging height	3060mm

PARAMETER

Max.digging depth	1750mm
Max.dumping height	2050mm
Max.digging radius	850mm
Maximum lifting height of earth shovel	210mm
Unit swing speed	8-10r/min
Total height	2250mm
Overall size	2600mm*950mm*2250mm

YFE16

MINI EXCAVATOR



SEAT

Comfortable seats filter out vibrations and bumps, reduce fatigue, and protect the lumbar spine



JOYSTICK

Standard side swing, perfect for working in small spaces.



ENGINE

It uses an international brand engine and a rear-lift integral hood, which makes it easy for users to complete daily maintenance by themselves, saving time and maintenance costs.



ADVANTAGE

Fully open, integrated front and rear hood design provides spacious maintenance space.

Maintenance points are centralized and one-stop maintenance is convenient and fast.

Long-lasting anti-wear hydraulic oil extends the maintenance cycle and saves maintenance costs by 42%.

PARAMETER

Engine	LD380
Power	26 HP
Operating weight	1600KG
Bucket Capacity	0.03 m3
Track Width	180mm
Track Length	1200mm
Bucket Width	400mm
Digging Height	2590mm
Digging Depth	1800mm
Transport length	2200mm

PARAMETER

Unloading height	1850mm
Overall Height	2170mm
Ground clearance	380mm
Wheel pitch	740mm
Chassis width:	1100mm
Verticalexavation depth	1400mm
Ground excavation radius	2500mm
Rotary radius	870mm
Machine size	2250*1100*2200mm
Lifting height ofshovel	325mm

YFE18

MINI EXCAVATOR



PARAMETER

Overall Dimension(L*W*H)	2300*1100*2200mm
Dead-Weight	1980KG
Engine model	Kubota/LaiDong
Rated power	14HP/25HP
Climbing ability	45°
Max. digging height	3100mm
Max. dumping height	2000mm
Max. digging depth	2100mm
Max. digging radius	3450mm
Minimum radius of gyration	840mm
Max. lifting height of earth shovel	325mm
The max. digging depth of dozer	350mm

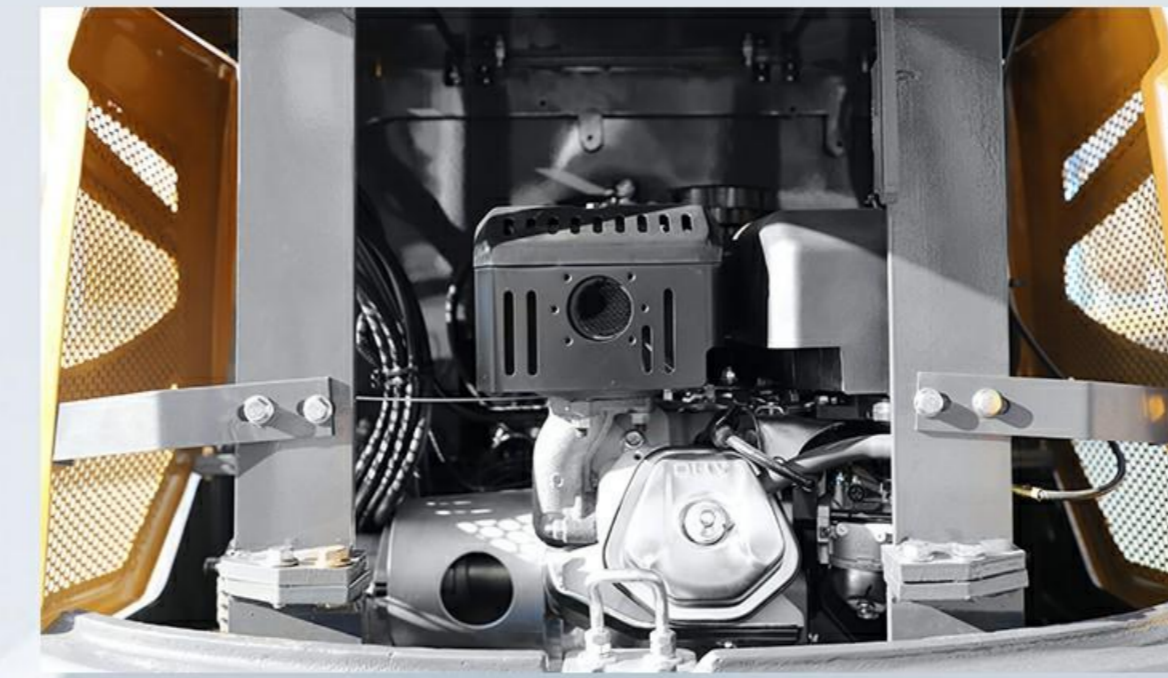
YFE18

MINI EXCAVATOR



PARAMETER

Operating Weight	1800KG
Engine (Customizable)	Kubota/LaiDong380
Power	10.2kw/19Kw
Hydraulic Cylinders, Pumps Valves (Customizable)	Warranty 1 year
Bucket Capacity	0.05CBM
Speed	9r/min
Dimensions (L*W*H)	3250mm*1100mm*2300mm
Track Length on Ground	1300mm
Track Width	180mm
Maximum Digging Height	3200mm
Maximum Dumping Height	2300mm



ENGINE

Standard fuel engine, compliant with Euro V and EPA standards

CONFIGURATION

- Targeted strengthening measures have been implemented for high-intensity and high-wear working conditions, which can significantly improve the working
- Select international brand engines, meet Euro V and EPA standards, and have guaranteed after-sales service.
- Foot-operated shovel and crushing control system. Can install large arm side swing (left and right swing arms are 60 degrees each).
- It can be customized according to personal needs, and cabs, air conditioners and heaters can be added to ensure trouble-free operation around the clock.



PILOT OPERATING HANDLE

Ergonomically designed comfortable seat equipped with a pilot operating handle. Ultimate operating comfort and precise control capabilities



THICKENED BULLDOZER

Improves the bulldozer blade's ability to resist deformation and wear, significantly increasing durability and service life



PARAMETER

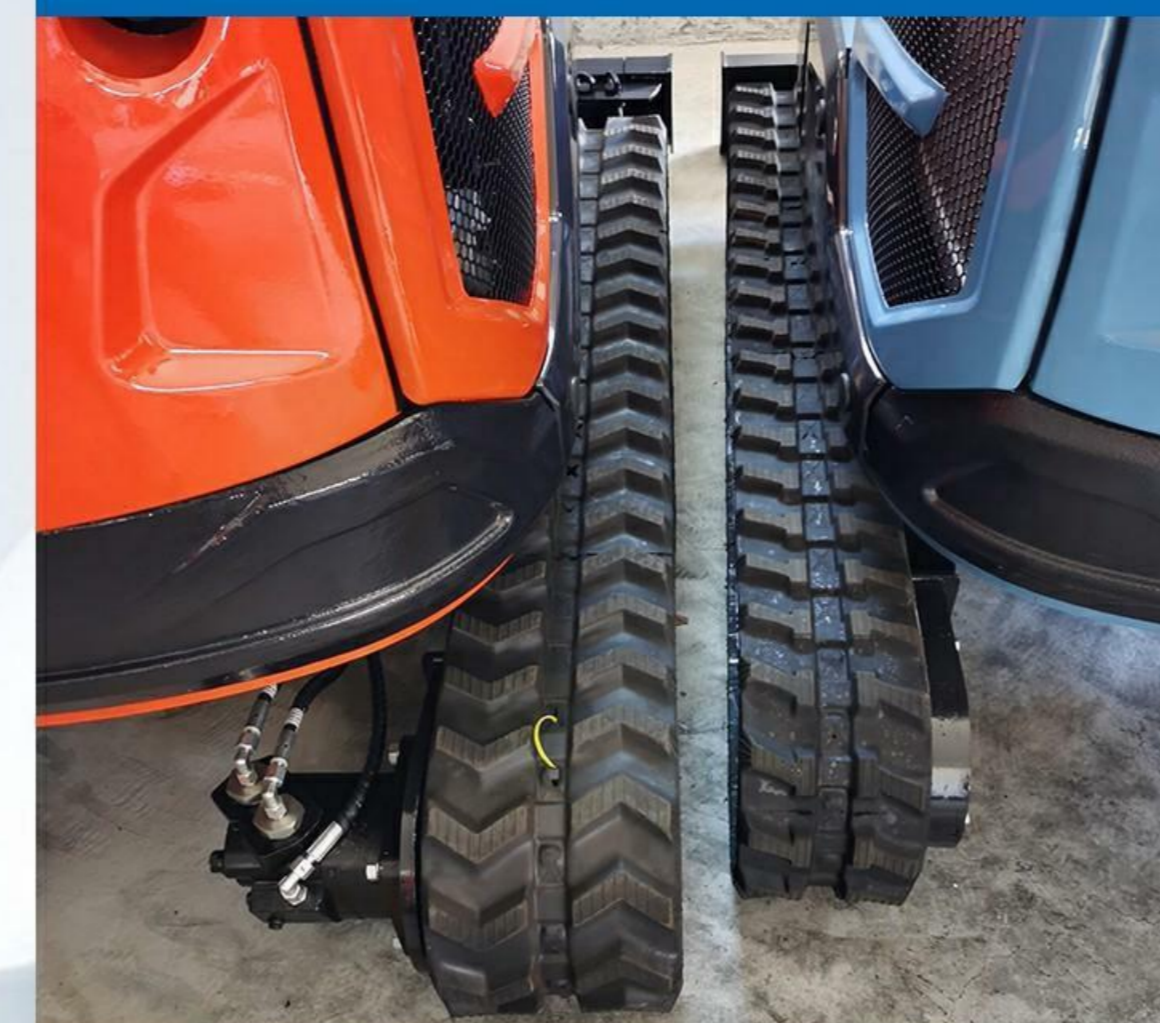
Maximum Digging Depth	2200mm
Maximum Digging Radius	3360mm
Minimum Turning Radius	1350mm
Platform Ground Clearance	370mm
Slewing Angle	360°
Gradability	30°
Maximum Dozer Blade Digging Depth	190mm
Maximum Dozer Blade Lift Height	260mm
Travel Speed	0-3km/h
Bucket Digging Force	16.5KN
Hydraulic System Pressure	16MPa

YFE18

MINI EXCAVATOR



TRACK



Upgrade 230mm width track.

OIL CYLINDER



Upgraded 35mm thicken cylinder.

TURNING JOINT



Compared with ordinary excavators, YFE18 uses Upgrade turning joint.

CRAFTSMANSHIP



Mold stamping process, better ventilation and cooling of the shell

BIG ARM



Hidden oil pipe + upper oil cylinder arm (the bucket is not easy to touch the oil cylinder)

SEPARATION PUMP



One pump in front, one pump on right, independent pumps on each side

PARAMETER

Engine	Laidong 385 /KUBOTA(D722/902)/Yanmar (370/374)
Power	29KW/18.1KW/10.4W
Operating weight	1800KG
Bucket capacity	0.04m ³
Track width	230mm
Track length	1500mm
Bucket width	415mm
Digging height	2900mm
Digging depth	2000mm

PARAMETER

Shipping length	2550mm
Unload height	2000mm
Full vehicle height	215mm
Ground clearance	380mm
Wheelbase	920mm
Chassis width	1100mm
Chassis length	1800mm
Radius of gyration	840mm
Overall size	2250*1100*2200mm

YFE18PRO

MINI EXCAVATOR



CAB

The cab can be installed to make working more comfortable.



PILOT OPERATION

Hydraulic pilot control system, more precise and stable control, can greatly reduce the operator's labor intensity



ENGINE

Adopt branded engines that meet emission standards, with low subsequent maintenance costs and risks.



PARAMETER

Unloading height	2000mm
Overall vehicle height	2150mm
Ground clearance	380mm
Wheel width	920mm
Chassis width	1135mm
Chassis length	1800mm
Ground digging radius	3227mm
Slewing radius	840mm
Overall size	2250*1135*2200mm
Bulldozer lift height	325mm



PARAMETER

Engine	Laidong LD385/Kubota(D722 /D902)/Yanmar(370 /374)
Power	29KW/18.1KW/10.4W
Operating weight	1800KG
Bucket capacity	0.04m ³
Track width	230mm
Track length	1500mm
Bucket width	415mm
Digging height	2900mm
Digging depth	2000mm
Transport length	2550mm

YFE20

MINI EXCAVATOR



OPERATING SYSTEM

The fully hydraulic operating system allows for easy and precise control and is equipped with a comfortable seat, which reduces driver fatigue while ensuring high efficiency.



HYDRAULIC CYLINDER BAFFLE

A baffle is installed above the hydraulic cylinder to effectively prevent it from being hit by external forces during operation.



ONE-PIECE BODY

The fuselage is made of high-strength manganese steel, with a highly integrated design, compactness and strong stability.



PARAMETER

Overall length	3320mm
Overall width	1100mm
Height	2200mm
Crawler width	230mm
Crawler length	1500mm
Body width	945mm
Operating weight	2000kg
Bucket capacity	0.04m ³
Engine	Laidong 385/18.8kw
Travel speed	2.1km/h

PARAMETER

Rotation speed	10/min
Platform ground clearance	380mm
Rotation angle	360
Sway angle	Left 45° Right 55°
Maximum digging height	2900mm
Maximum dumping height	1780mm
Maximum digging depth	2000mm
Maximum digging radius	3500mm
Dozer blade depth	325mm
Dozer blade lift height	308mm

YFE20

MINI EXCAVATOR



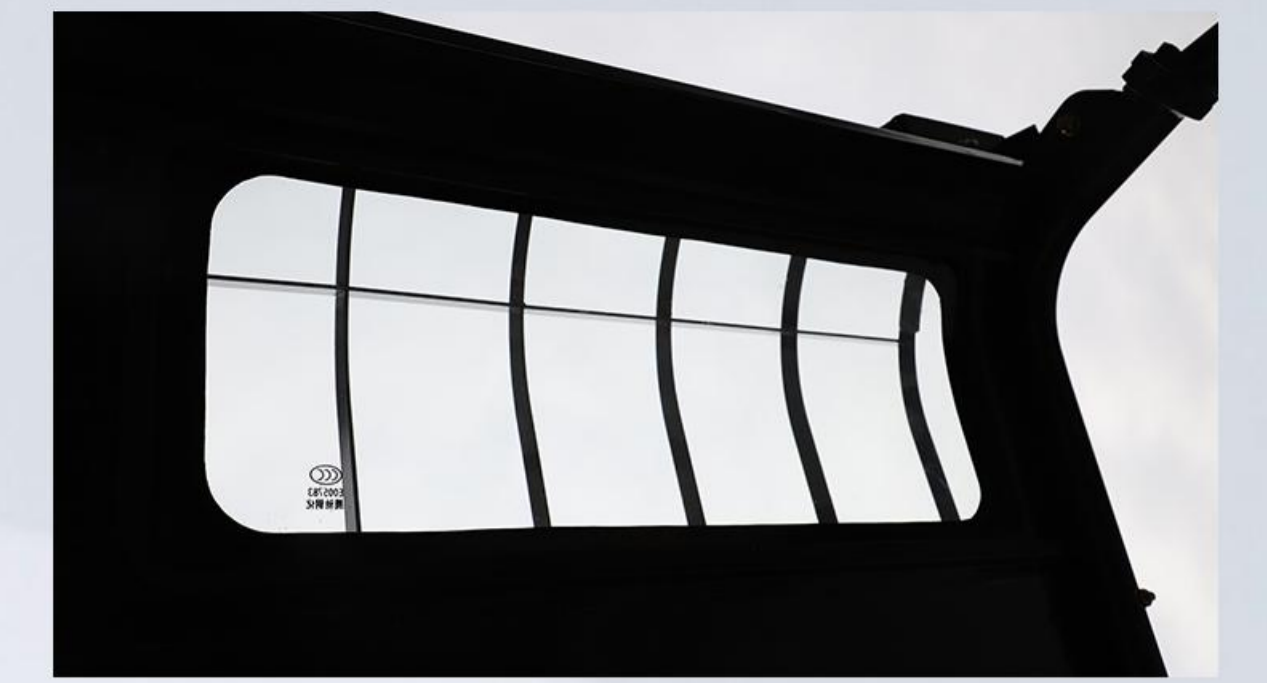
SEAT

Ergonomically designed comfortable seat with shock-absorbing and heat-insulating effects



BOOM CYLINDER INVERTED

The boom cylinder is inverted to avoid collision during work



SKYLIGHT

The skylight above the cab provides good working visibility.



ADVANTAGE

Support customization. Support replacement of multiple accessories.

Maintenance points are centralized and one-stop maintenance is convenient and fast.

Long-lasting anti-wear hydraulic oil extends the maintenance cycle and saves maintenance costs by 42%.

PARAMETER

Operating Weight	2000kg
Engine	Kubota D722
Rated power	10.2KW
Working pressure	16MPa
Travel speed	3km/h
Slewing speed	13r/min
Bucket capacity	0.03m ³
Bucket width	400mm
Side swing amplitude	Left 55° Right 55°
Fuel tank capacity	10.2L
Hydraulic tank capacity	20L
Gradability	30°
Overall length	3100mm

PARAMETER

Overall width	1150mm
Overall height (to seat)	1150mm
Overall height (to roof of carport)	2320mm
Counterweight ground clearance	400mm
Minimum ground clearance	100mm
Track ground length	1500mm
Track spacing	700mm
Track width	2300mm
Maximum digging height	3180mm
Maximum unloading height	1700mm
Maximum digging distance	3700mm
Maximum digging depth	2000mm

YFE20

MINI EXCAVATOR



PARAMETER

Engine	Changchai 390/Kubota (722/902)
Power	15HP
Bucket Capacity	0.045 m ³
Track Width	200mm
Track Length	1500mm
Bucket Width	400mm
Digging Height	2900mm
Digging Depth	2150mm
Transport length	2300mm



ENGINE

Perfectly matched power unit, stable power output, reliable and stable operation, and long service life. The connecting rod assembly scientifically and reasonably minimizes noise during operation.



TRAVEL MOTOR

It uses a high-performance travel motor suitable for engineering vehicles, which perfectly adapts to various road surfaces and has stable driving and handling quality.



PILOT OPERATION

The highly integrated center console, control levers and clutch lever are designed to minimize operator fatigue and greatly improve work efficiency.

SELLING POINT

- Strong and strong arms
- Wear-resistant engineering crawler tracks
- Cylinder protective cover
- High performance engine,energy-saving.
- Thickening and enlargingthe bucket



PARAMETER

Unloading height	2200mm
Overall Height	2150mm
Ground clearance	380mm
Wheel pitch	770mm
Chassis width	1100mm
Vertical excavation depth	2050mm
Ground excavation radius	2500mm
Rotary radius	1190mm
Machine size	2400*1150*2200mm

YFE20

MINI EXCAVATOR



SIDE SWING

Robot welding, precise forming and high torque.



OIL CYLINDER

Advanced one-piece design



CAB

Hydraulic pilot operating system, high precision and fast response.



ENGINE

Internationally renowned brand engine.

- Integral reinforced chassis, robot welding, stable arc, controllable penetration, and beautiful shape.

- Various accessories can be installed, one machine can be used for multiple purposes



PARAMETER

Bucket capacity (m ³)	0.06
Rotation speed (rpm)	10-12
Maximum climbing angle (°)	35
Maximum digging force of bucket (KN)	14
Maximum digging force of bucket rod (KN)	10
Engine model	Laidong 3TE25/Kubota D1105
Power(kw)	18.4kw
Track width(mm)	230
System pressure (MPa)	18

PARAMETER

Overall dimensions (mm)	3865*1050*2270
Cab height (mm)	2270
Wheelbase (mm)	1230
Wheel (rail) gauge (mm)	820
Minimum ground clearance (mm)	210
Tail turning radius (mm)	1125
Maximum digging height (mm)	3365
Maximum unloading height (mm)	2385
Maximum digging depth (mm)	2050

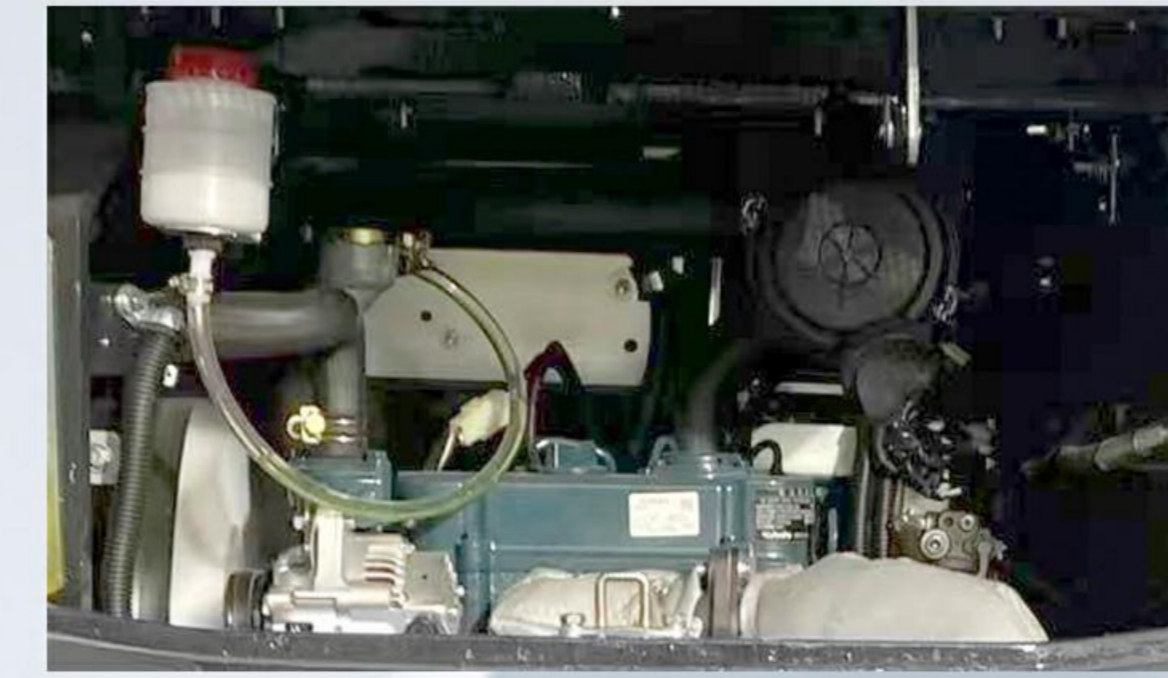
YFE20U

MINI EXCAVATOR



PARAMETER

Bucket Capacity (m ³)	0.045m ³
Swing Speed (rpm)	8rpm
Maximum Gradeability Angle (°)	30°
Maximum Bucket Digging Force (kW)	15.2KN
Maximum Arm Digging Force (KN)	12.7KN
Engine Model:	LD 385/Kubota 722/902/Yanmar 374
Power/Speed (kW/rpm)	18.1KW/10.2KW/11.8KW/10.8K
Operating weight (kg)	2000kg
System Pressure (MPa)	21.5MPa
External Dimensions: Length x Width x Height (mm)	3322*1160*2196(mm)
Cab Height (mm)	1595(mm)
Wheelbase(mm)	1260(mm)



ENGINE

The engine is fully powered by internationally renowned brands, offering high reliability, high fuel efficiency, easy maintenance, low failure rate, and low maintenance costs.

SELLING POINT

- The tailless slewing design and compact body can be equipped with a retractable chassis or a deflectable working device, and the side-swing function of the boom enables it to maneuver easily in narrow spaces.
- The integrated reinforced chassis, robot welding and welding seam shaping completely eliminate the influence of human factors.
- The crushing pipeline is standard, and various attachments can be installed, making one machine multi-purpose.



HIDDEN TRAVEL MOTOR

The hidden travel motor effectively avoids direct collision with obstacles and greatly reduces the risk of damage.



HYDRAULIC OPERATION

The fully hydraulic operating system allows for precise and effortless control, and the side safety lock greatly improves safety.



PARAMETER

Wheel/Track Gauge (mm)	930(mm)
Minimum Ground Clearance (mm)	480(mm)
Tail Swing Radius (mm)	927(mm)
Maximum Digging Height (mm)	3080(mm)
Maximum Dumping Height (mm)	2368(mm)
Maximum Digging Depth (mm)	2100(mm)
Maximum Vertical Digging Depth (mm)	1700(mm)
Maximum Digging Radius (mm)	3390(mm)
Maximum Ground Clearance (mm)	206(mm)
Maximum Bulldozer Blade Lowering Depth (mm)	343(mm)
Boom Swing Angle (Left)	45°
Boom Swing Angle (Right)	45°

YFE20U

MINI EXCAVATOR



PRODUCT SELLING POINT

- The load-sensitive system achieves a perfect match between the engine and the main pump, accurately provides flow, improves operating efficiency, and saves fuel and time.
- High-end configuration, using internationally renowned brand hydraulic components to ensure high reliability of the hydraulic system.



01

More powerful brand engine



02

Steel and rubber tracks are always interchangeable



03

Integral reinforced chassis, robot welding



PARAMETER

Bucket capacity (m ³)	0.07
Rotation speed (rpm)	0-9
Maximum climbing angle (°)	35
Maximum digging force of bucket (KN)	18
Maximum digging force of stick (KN)	11
Engine model	Kubota D1105
Power/speed (KW/rpm)	14.2/2000
Tire model	-
System pressure (MPa)	21.5

PARAMETER

Maximum digging height (mm)	3700
Maximum unloading height (mm)	2440
Maximum digging depth (mm)	2400
Maximum vertical digging depth (mm)	2025
Maximum digging radius (mm)	4040
Minimum turning radius (mm)	1610
Total length (during transportation) (mm)	3555
Overall width (transportation/operation) (mm)	990/1300
Overall height (when transported) (mm)	2290

YFE25

MINI EXCAVATOR



Inverted oil cylinder
Hidden oil pipe.



Changchai 390 or
Kubota D1105.



Load Sensing Multiway
Valve and Piston Pump.



Widen and thicken the
tracks.



Customized oil return
line traveling motor.



Pilot operation



PARAMETER

Engine	Kubota D1105/ Changchai 390
Bucket capacity	0.06m ³
Track width	250mm
Track length	1800mm
Bucket width	40cm
Digging height	3388mm
Digging depth	2600mm
Unloading height	2673mm
Height of the whole car	2290mm

PARAMETER

Machine width	1300mm
Ground clearance	420mm
Chassis width	1300mm
Chassis length	2150mm
Ground excavation radius	4163mm
Turning radius	756mm
Lifting height of dozer shovel	450mm
Shovel height	22cm
Cab wooden box size	2800*1400*2500

YFE25

MINI EXCAVATOR



DETAIL:

1. Simple to operate, compact and flexible, and convenient to transport. It can be used in small sites, indoor decoration, and feces removal in breeding plants. It is also suitable for planting in orchards such as vineyards, oranges, and navel oranges, digging ditches, fertilizing, weeding, etc.;
2. It has multiple functions such as excavation, crushing, trench cleaning, and drilling. It can quickly replace attachments and greatly improve the machine utilization rate.
3. Excellent work efficiency and high cost performance

OPERATING SYSTEM



The pilot hydraulic control handle is not easy to feel tired even after long-term continuous work and can always maintain stable operation.

ENGINE



Equipped with a famous brand engine, customers can customize it according to their needs. Sound insulation cotton is added to the rear cover.

TRAVEL MOTOR



Concealed piping layout to prevent damage from scratches and collisions when working in narrow spaces

PARAMETER

Overall length	4000mm
Overall width	1 350mm
Height	2280mm
Crawler width	230mm
Crawler length	1650mm
Body width	1060mm
Operating weight	2500kg
Bucket capacity	0.07
Engine	Changchai 390 20kw
Travel speed	3.4km/h

PARAMETER

Rotation speed	10r/min
Platform ground clearance	390mm
Rotation angle	360°
Sway angle	Left 45° Right 55°
Maximum digging height	3530mm
Maximum dumping height	2260mm
Maximum digging depth	2915mm
Maximum digging radius	4570mm
Dozer blade depth	297mm
Dozer blade lift height	230mm

YFE26

MINI EXCAVATOR



The engine compartment adopts a rear opening type for easy maintenance and repair.

ENGINE 01

Standard configuration of swing arm, high and low speed walking function.

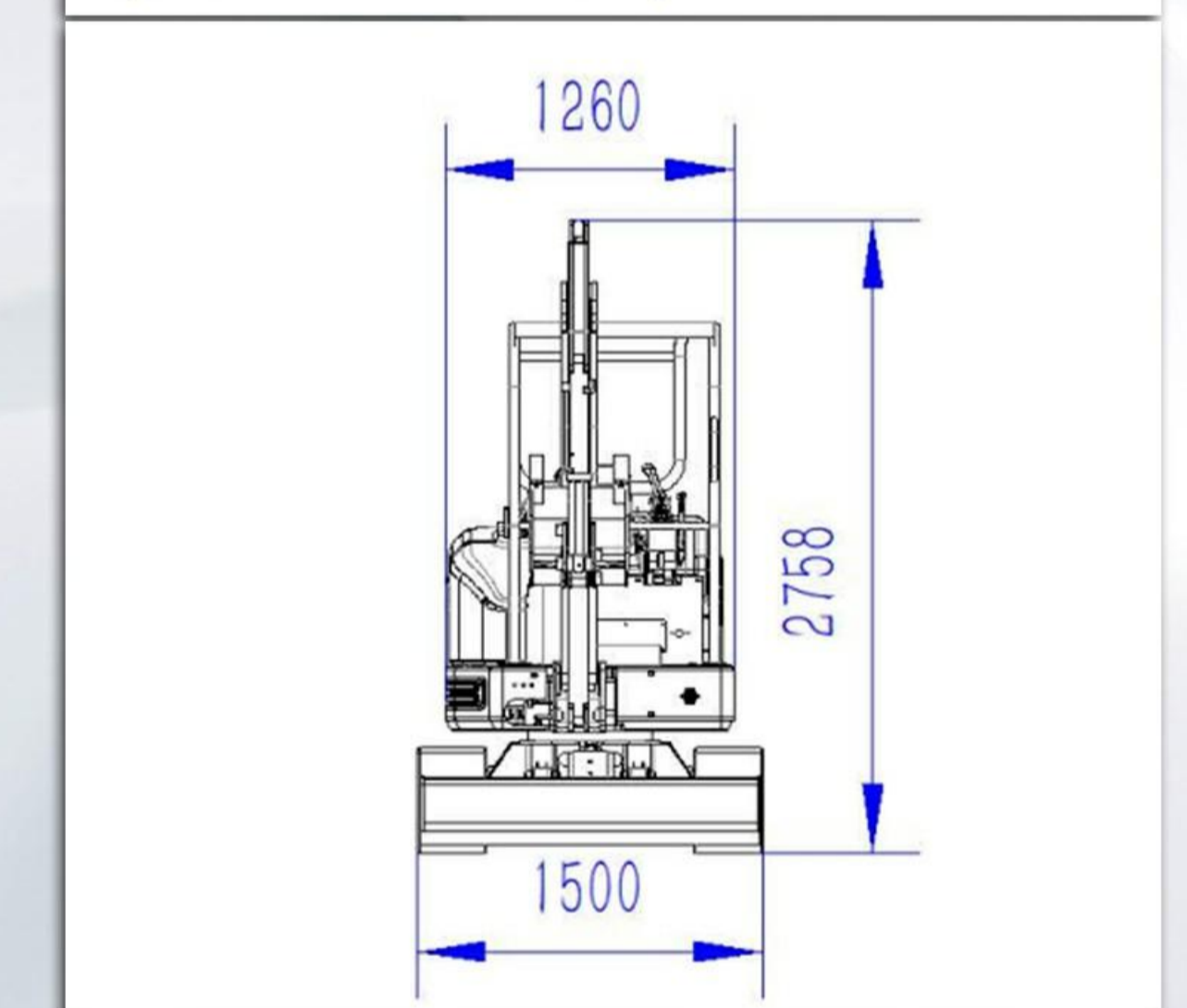
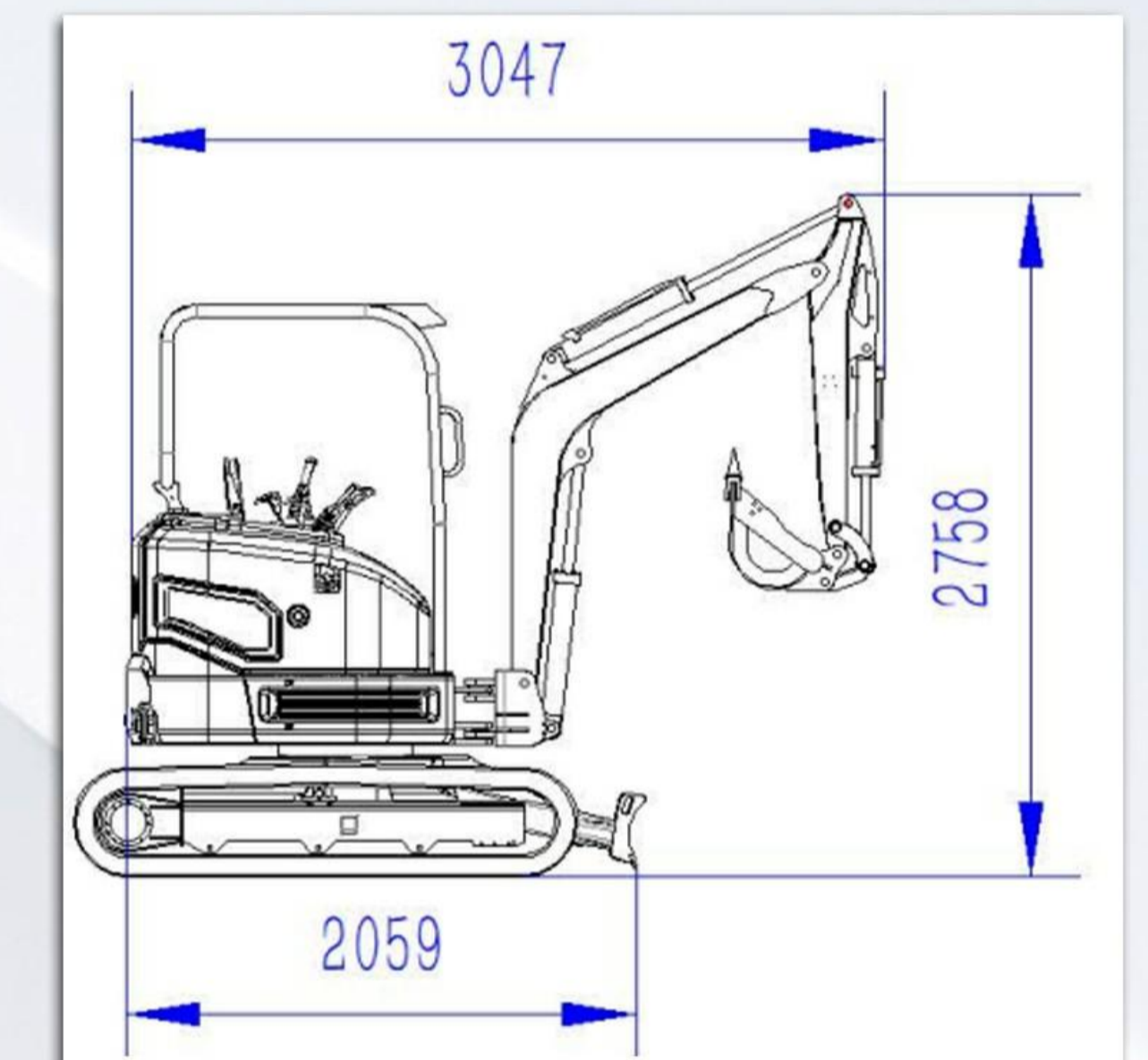
CONFIGURATION 02

The increased tank volume increases working time compared to ordinary machines.

INCREASE 03

Install a protective plate on the boom cylinder to prevent collision. Hydraulic pilot control handle, light and flexible, easy to operate

OIL CYLINDER 04



PARAMETER

Operation weight	3000KG
Bucket capacity	0.075 m ³
Engine type	Changchai /KUBOTA
Engine power	20KW
Total length	3074n
Overall width	1500m
Full height	2313mm
Hydraulic system pressure	18mpa
Number of single side support whee	3 pieces

PARAMETER

Ground to disk distance	534m
Front and rear wheelbase	1560mn
Left-right gauge	1200mm
Boom deflection	45 (left)
Boom deflection	55 (right)
Tail swing radius	936mm
Minimum ground clearance	230mn
Bucket maximum digging force	19.5 KN
Number of single-side sprockets	1 piece

YFE30

MINI EXCAVATOR



ENGINE

Adopt internationally renowned brand engine, with large torque, strong power, energy saving and fuel saving.



CAB

Hydraulic pilot operating system, high precision, fast response and long service life.



SIDE SWING

The big arm can be swung 65° to the left and right, suitable for use in small spaces.



OIL CYLINDER

Integrated design, with a protective plate installed on the arm cylinder to prevent collision.



PARAMETER

Bucket capacity (m ³)	0.1
Swing Speed (rpm)	1-10
Gradeability (°)	58
Max.Bucket Digging Force (KN)	23.5
Max.Arm Digging Force (KN)	14
Engine Model	D1105-E4B
Power/revolution speed (KW/rpm)	14/2000
Track width(mm)	280
System Pressure ((MPa)	20.5

PARAMETER

Dimension Length*Width*Height (mm)	4195x1550x2480
Cabin Height (mm)	2480
Axle Base (mm)	1550
Wheel(track) Distance (mm)	1250
Minimum ground clearance (mm)	285
Tail Swing Radius (mm)	860
Max.Digging Height (mm)	4427
Max.Dumping Height (mm)	3005
Max.Digging Depth (mm)	2830

YFE30

MINI EXCAVATOR



PROFESSIONAL STRUCTURAL PARTS

The use of high-strength, thickened steel plates significantly improves wear and impact resistance compared to conventional excavators, significantly extending their service life. A protective baffle is added to the upper cylinder, and the boom hinge has been reinforced to withstand impact and torsional loads in harsh working conditions.

ADVANTAGE

1. Renowned brand engine, powerful power, and low fuel consumption.
2. Imported hydraulic system, high operating efficiency.
3. Professional structural components and working mechanism, reliable and durable.
4. Humanized design, comfortable operation, and easy maintenance.



HUMANIZED OPERATING SYSTEM

Hydraulic operation is precise and labor-saving. The multi-functional operating area can realize machine travel, steering and bucket arm movement. It is fully functional and easy to operate. The comfortable seat increases working comfort.



HIGH-QUALITY CHASSIS

The chassis is made of high-strength, high-wear-resistant steel and uses robotic automatic welding, which greatly improves the fatigue strength of the welded parts.



PARAMETER

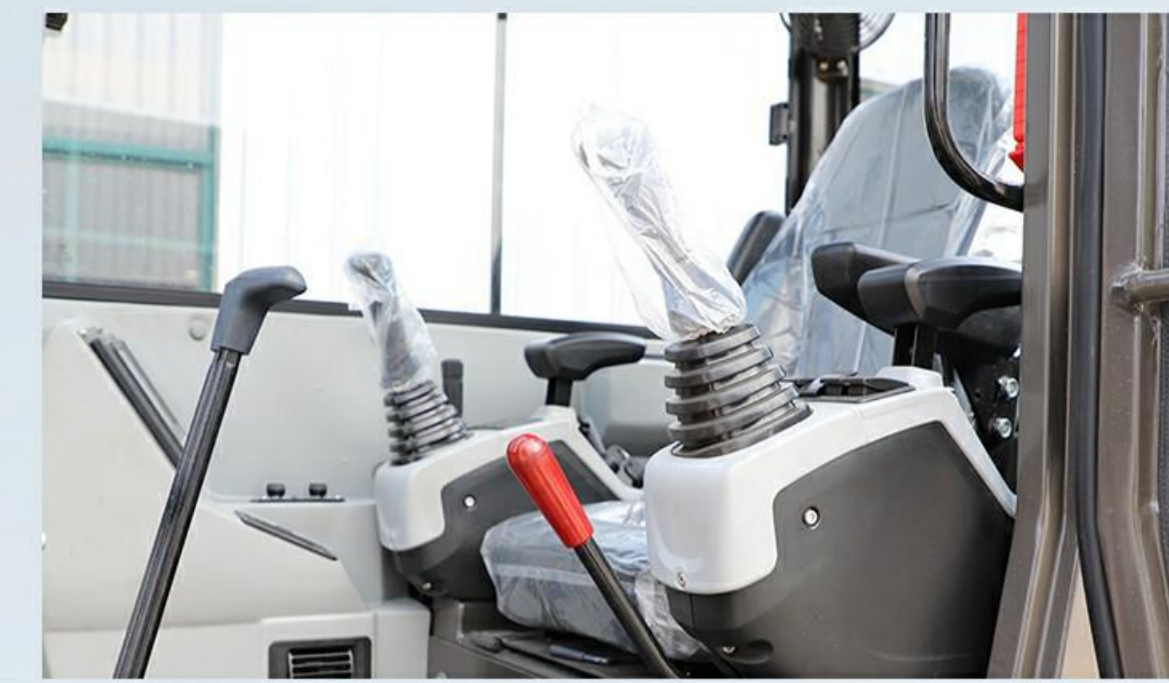
Overall length	4200mm
Overall width	1350mm
Height	2240mm
Crawler width	230mm
Crawler length	2000mm
Body width	1350mm
Operating weight	3000kg
Bucket capacity	0.1m ³
Engine	Changchai 390 20kw
Travel speed	2.7km/h

PARAMETER

Rotation speed	10r/min
Platform ground clearance	295mm
Rotation angle	360°
Swing angle	Left 45° Right 55°
Maximum digging height	3635mm
Maximum dumping height	2385mm
Maximum digging depth	2360mm
Maximum digging radius	4810mm
Dozer blade depth	297mm
Dozer blade lift height	230mm

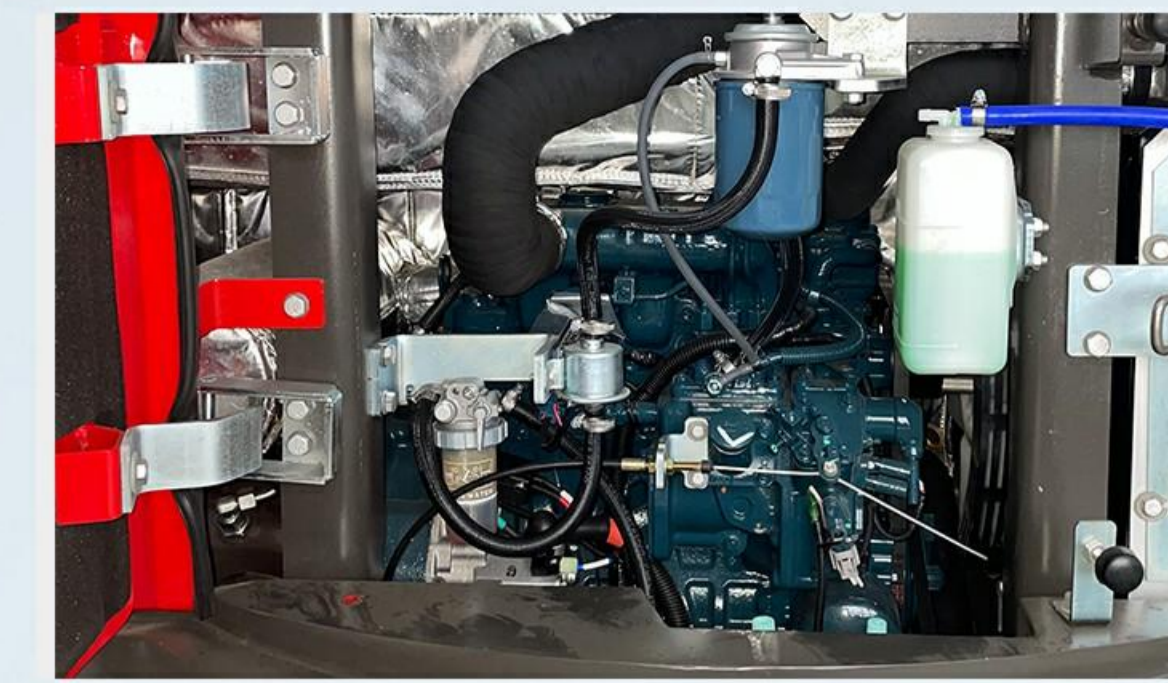
YFE42

MINI EXCAVATOR



CAB

Luxurious cab, comfortable seats and wide field of view make the operator work easily.



KUBOTA ENGINE

It has the characteristics of high reliability, high fuel efficiency, high maintenance convenience, low failure rate and low maintenance cost.



HEAT DISSIPATION

The special design separates the engine from the heat dissipation space and uses an enhanced cooling fan to improve cooling efficiency.

SELLING POINT

- The components of the hydraulic system are all famous brand products to ensure stable quality.
- Equipped with dual fuel filters to ensure fuel purity and protect the engine.
- The boom deflection design meets narrow working conditions, and the rubber tracks are strengthened to protect the road surface.
- Extend the hydraulic pipelines of various accessories.



PARAMETER

Operating weight(kg)	4200
Rotation speed (rpm)	1-11
Maximum climbing angle (°)	30
Maximum digging force of bucket (KN)	30
Maximum digging force of bucket rod (KN)	18
Engine type	Kubota D1703
Power/speed (KW/rpm)	18.5/2200
Track width(mm)	300
System pressure (MPa)	22.5

PARAMETER

Maximum digging height (mm)	4800
Maximum unloading height (mm)	3406
Maximum digging depth (mm)	3208
Maximum vertical digging depth (mm)	2957
Maximum digging radius (mm)	5480
Minimum turning radius (mm)	2530
Maximum ground clearance of bulldozer (mm)	365
Maximum sinking depth of bulldozer board (mm)	385
Dimensions	4915*1720*2525

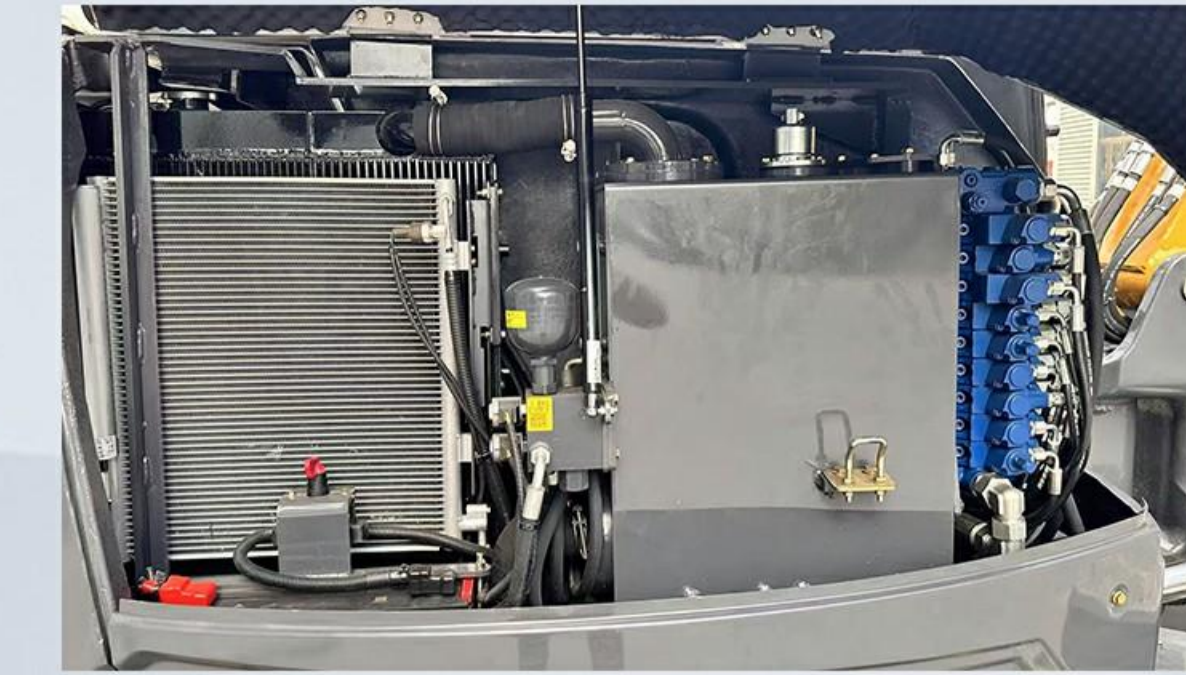
YFE70U

MINI EXCAVATOR



CAB

The luxurious cab, comfortable seats, wide field of vision, electronic display screen, radio, and sunshade give the operator a comfortable driving experience.



KUBOTA ENGINE

It adopts the mainstream load-sensing system, is equipped with a large-capacity hydraulic oil tank and an efficient independent cooling system, and a sophisticated multi-filtration system to ensure that the hydraulic oil is extremely clean, greatly extending the life of core components such as the hydraulic pump and motor.



HEAT DISSIPATION

The special design separates the engine from the heat dissipation space and uses an enhanced cooling fan to improve cooling efficiency.

SELLING POINT

- The components of the hydraulic system are all famous brand products to ensure stable quality.
- Equipped with dual fuel filters to ensure fuel purity and protect the engine.
- The boom deflection design meets narrow working conditions, and the rubber tracks are strengthened to protect the road surface.
- Extend the hydraulic pipelines of various accessories.



PARAMETER

Overall length	4200mm
Overall width	1350mm
Height	2240mm
Crawler width	230mm
Crawler length	2000mm
Body width	1350mm
Operating weight	7000kg
Bucket capacity	0.1m ³
Engine	Changchai 390 20kw
Travel speed	2.7km/h

PARAMETER

Bucket rotation speed	10r/min
Platform ground clearance	295mm
Rotation angle	360°
Sway angle	Left 45° Right 55°
Maximum digging height	3635mm
Maximum dumping height	2385mm
Maximum digging depth	2360mm
Maximum digging radius	4810mm
Bulldozer depth	297mm
Bulldozer lift height	230mm