

SKID STEER **LOADER**



SKID STEER LOADER

INFRONT

SHANDONG INFRONT MACHINERY CO., LTD.

AUTHORIZED DEALERSHIP

PT. PRODEMA GROUP INDONESIA

Tel: +62 877 6971 5224

Email: hello@prodemaindonesia.com

Add: Jl. Patih Jelantik, Komp. Ruko Kuta Galeria, RS.08
Kuta, Badung, Bali. 80361

Note: Due to technological upgrades, the actual product may be different from what is shown. Diagram, photos and information are for reference only.

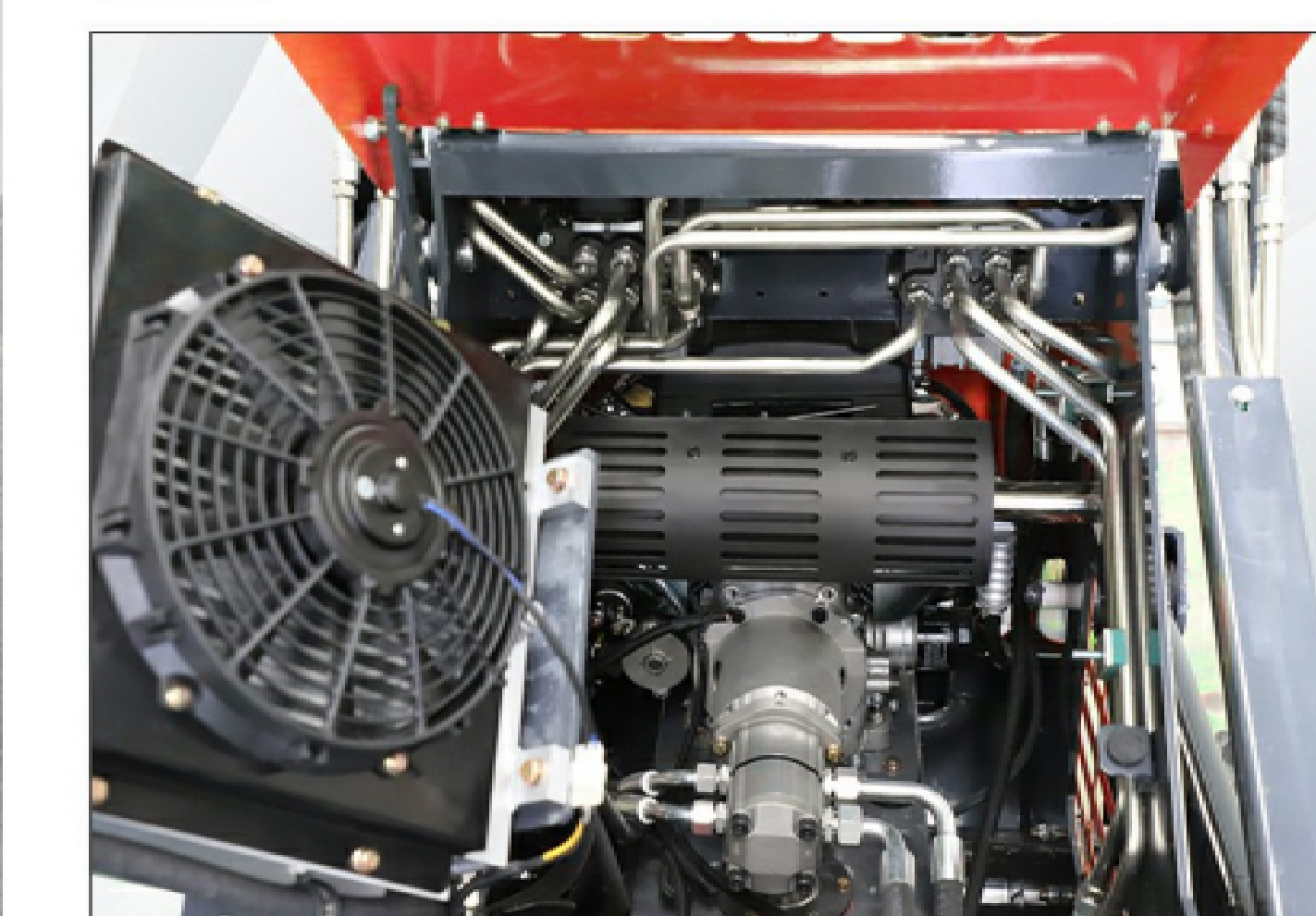


PRODUCT CATALOG

YF380 SKID STEER LOADER



01 Operating platform



02 Engine compartment



03 Pedals

PARAMETER	METRIC	U.S.
Max working height	2100mm	82.7inch
Max pin height	1880mm	74.01 inches
Max Dumping height	1480mm	58.26 inches
Max Dumping distance	430mm	16.92 inches
Max Dumping Angle	30°	30°
Rollback of bucket on ground	25°	25°
Departure angle	27°	27°
Total height	1270mm	50 inches
Ground clearance	110mm	4.33inch
Wheel base	760mm	29.92inch
Overall length without bucket	1782mm	70.15 inches
Total width	810mm	31.88inch
Bucket width	1090 mm	42.91 inches
Total length with bucket	2285 mm	89.96 inches
Turn radius forward turning	1300mm	51.18inch
Overall length without the bucket after folding the pedal	1570 mm	61.81 inches

PARAMETER	METRIC	U.S.
Engine		
Rated Power (KW)	18.2KW(23HP)	
Rotating speed (rpm)	3600	
Noise (DB)	≤95	
Hydraulic System		
Pressure (MPa)	17	
Working Time(s)		
Raise	4	
Dump	1.3	
Lower	3.2	
Operating Load	280kg	617 lbs
Bucket Capacity	0.13 m ³	4.59 ft ³
Max Lifting Force	458Kg	1009Lb
Travel Speed	0-5.5Km/h	3.5 mlie/h
Operating Weight	880kg	1940 lbs

OPTIONAL	810MM	880KG	CUSTOMIZABLE
Engine	Total width	Operating weight	individuation

PRODUCT FEATURES

The footrest can be lifted up and has a locking function.
 The engine hood is stamped and formed, which is strong and reliable.
 The oil circuit layout is reasonable and easy to maintain.
 Three machine types: triangular crawler, flat crawler, wheeled.

YF400 SKID STEER LOADER



01 Operating platform



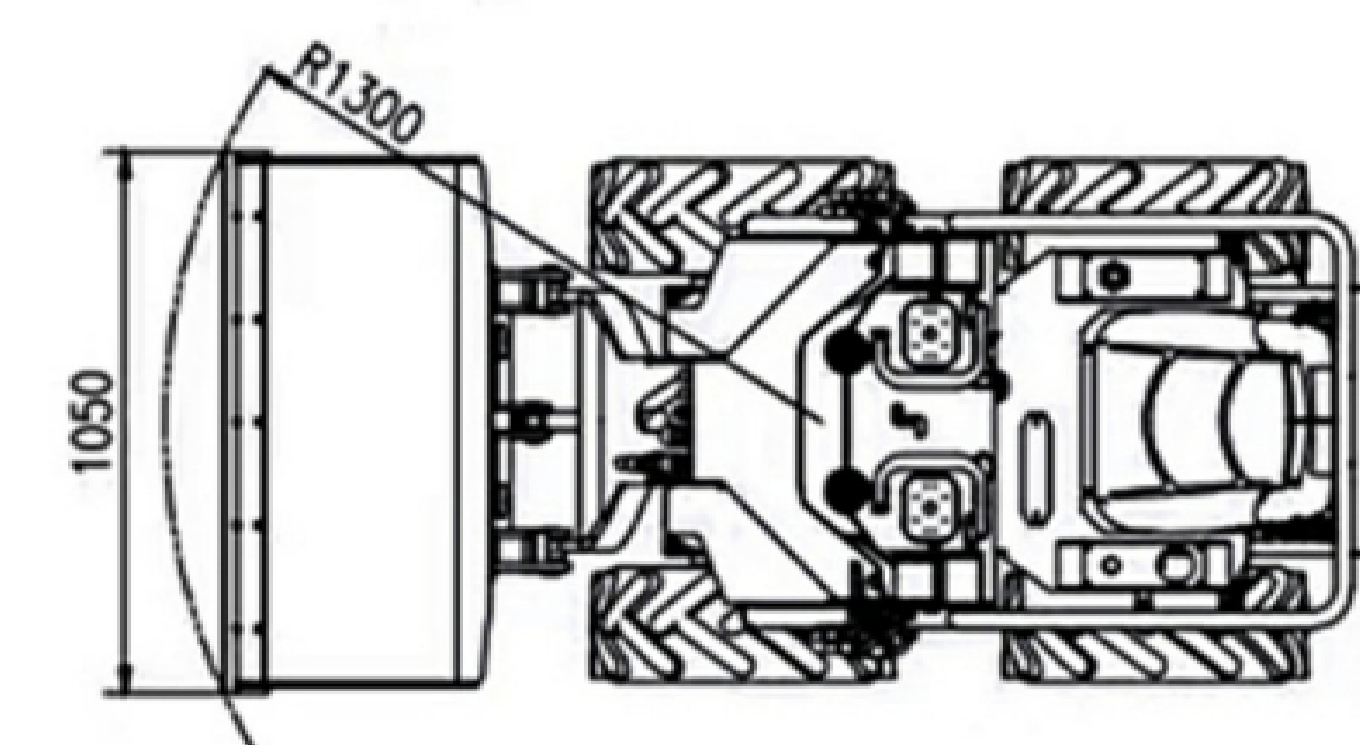
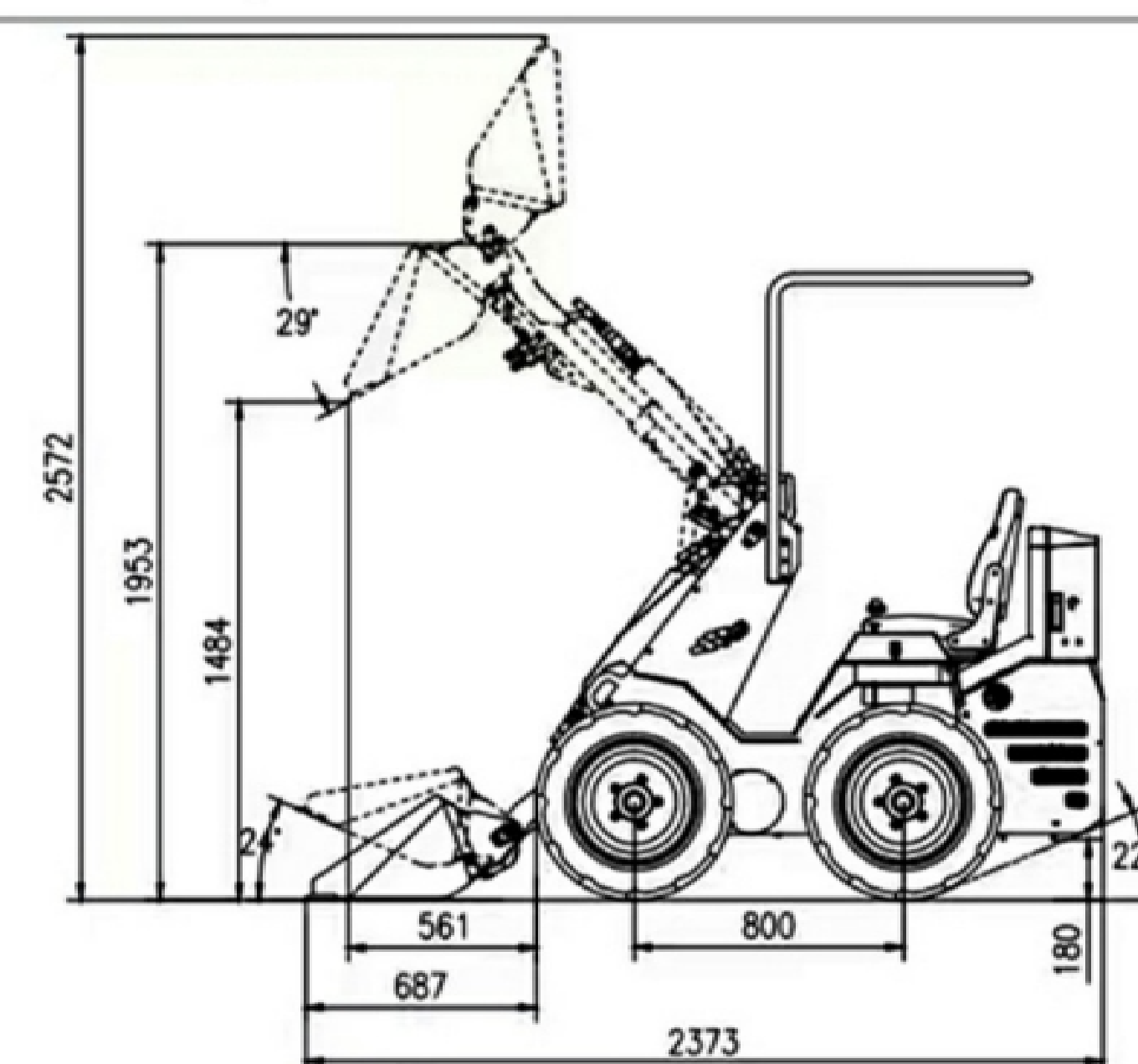
01 Lifting arm



01 Seat

PARAMETER	METRIC
Rated Load Capacity	238kg
Bucket Volume	0.13 m ³
Maximum Lifting Force	600kg
Speed of Work	0-4.2km/h
Preset Pressure	18.5 MPa
Lifting time	47 seconds
Fall Time	32s
Tipping Time	4.6s
Gradeability	30%
Working Weight	755-780kg
Engine	Briggs & Stratton/RATO/KOOP
Type	Petrol/diesel
Output Power	13.5HP/15HP/11.7HP
Fuel Consumption	≤3.8, ≤4.2, ≤2.3
Start Mode	Electric Start
Fuel Tank	6.6L, 6.7L, 5.5L
Engine oil	1.1L, 1.1L, 1.6L

PARAMETER	METRIC
Hydraulic Tank	23L



BRIGGS & STRATTON /RATO/KOOP
Engine

30%
Gradeability

755-780KG
Operating weight

CUSTOMIZABLE
individuation

PRODUCT FEATURES

The machine has a narrow body, allowing for flexible operation in confined spaces. The ride-on design enhances operator comfort. Its operation is simple, making it easy for beginners to learn. It is available with either tires or tracks to adapt to various working environments.

YF480 SKID STEER LOADER



01 Operating platform



02 Bucket leveling



03 Quick-change connectors

PARAMETER	METRIC①	METRIC②
Engine model	Rato R740D	Kubota
Rated power	16.8kw/3600rpm	10.4HP
Cylinder	2	3
Intake method	Naturally aspirated	nature
Emission standard	EPA/ERUO5	EPA/ERUO5
Rated load	350Kg	390KG
Maximum load	480Kg	479KG
Maximum digging force	5.5KN	0.14m3
Bucket capacity	0.12m ³	0-3Km/h
Travel speed	0-4km/h	
Working three items	9s	17MPa
Working system pressure	16bar	16L
Fuel tank capacity	21L	
Vehicle weight	976kg	
Track model	180*72*35	
Vehicle height	1300mm	1300mm

PARAMETER	METRIC①	METRIC②
Total length with standard bucket	2229mm	2343mm
Vehicle width	1024mm	1070mm
Total length without bucket	1700mm	1812mm
Bucket width	1070mm	
Tail length	220mm	245mm
Maximum operating height	2561mm	2703mm
Height to bucket pin	2071mm	2180mm
Maximum height of bucket lying flat	2024mm	2013mm
Dumping height	1376mm	1750mm
Dumping distance	231mm	280mm
Wheelbase	800mm	
Ground clearance	195mm	120mm
Tips of bucket on the ground	25°	
Tips of bucket at highest position	88°	

**RATO R740D
KUBOTA**
Engine

**2229*1024*1300
2343*1070*1300**
Total width

480KG
Operating weight

CUSTOMIZABLE
Individuation

PRODUCT FEATURES

1. Simple central control for easy operation.
2. Balanced bucket, simple structure, reliable operation, zero transmission backlash, and smooth movement.
3. Equipped with wear-resistant hydraulic hoses and elastic rubber materials to ensure long hydraulic hose life.
4. ame model, multiple configurations to choose from

YF490 SKID STEER LOADER



01 Operating platform



02 Boom cylinder



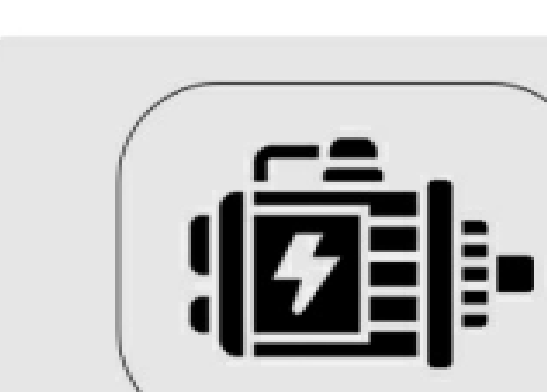
03 Rear flip cover design for easy maintenance

PARAMETER

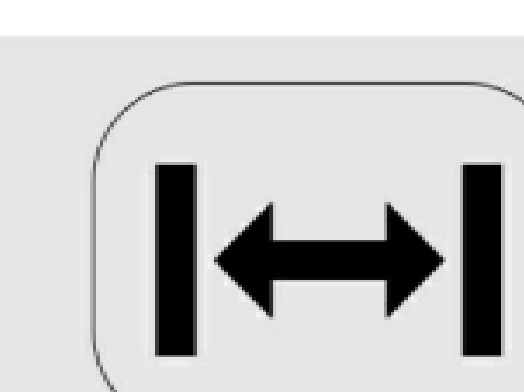
Engine model	RATO R740/BRIGGS & STRATTON/KOOP
Rated power	15kw
Cylinders	2
Intake method	Naturally Aspirated
Emission standards	Euro 5/EPA
Rated load	250kg
Maximum load	350kg
Maximum breakout force	450kN
Bucket capacity	0.12m
Travel speed	0-6km/h
Sum of three operating parameters	9s
Operating system pressure	17-21bar
Fuel tank capacity	10L
Operating weight	1200kg
Track dimensions	18*72mm
Track size	18*8.5-8
Maximum operating height	2514mm

PARAMETER

Height to bucket pin	1933mm
Vehicle height	1872mm
Maximum height with bucket flat	2100mm
Overall length without bucket	2000mm
Overall length with standard bucket	2644mm
Dumping height	1429mm
Dumping distance	595mm
Tilt angle of bucket on ground	27°
Tilt angle of bucket at highest position	34°
Wheelbase	925mm
Ground clearance	195mm
Tail length	500mm
Vehicle width	1089mm
Bucket width	1050mm



**RATO R740
BRIGGS & STRATTO
KOOP**
Engine



2644*1089*1872
Machine size



1200KG
Operating weight



CUSTOMIZABLE
individuation

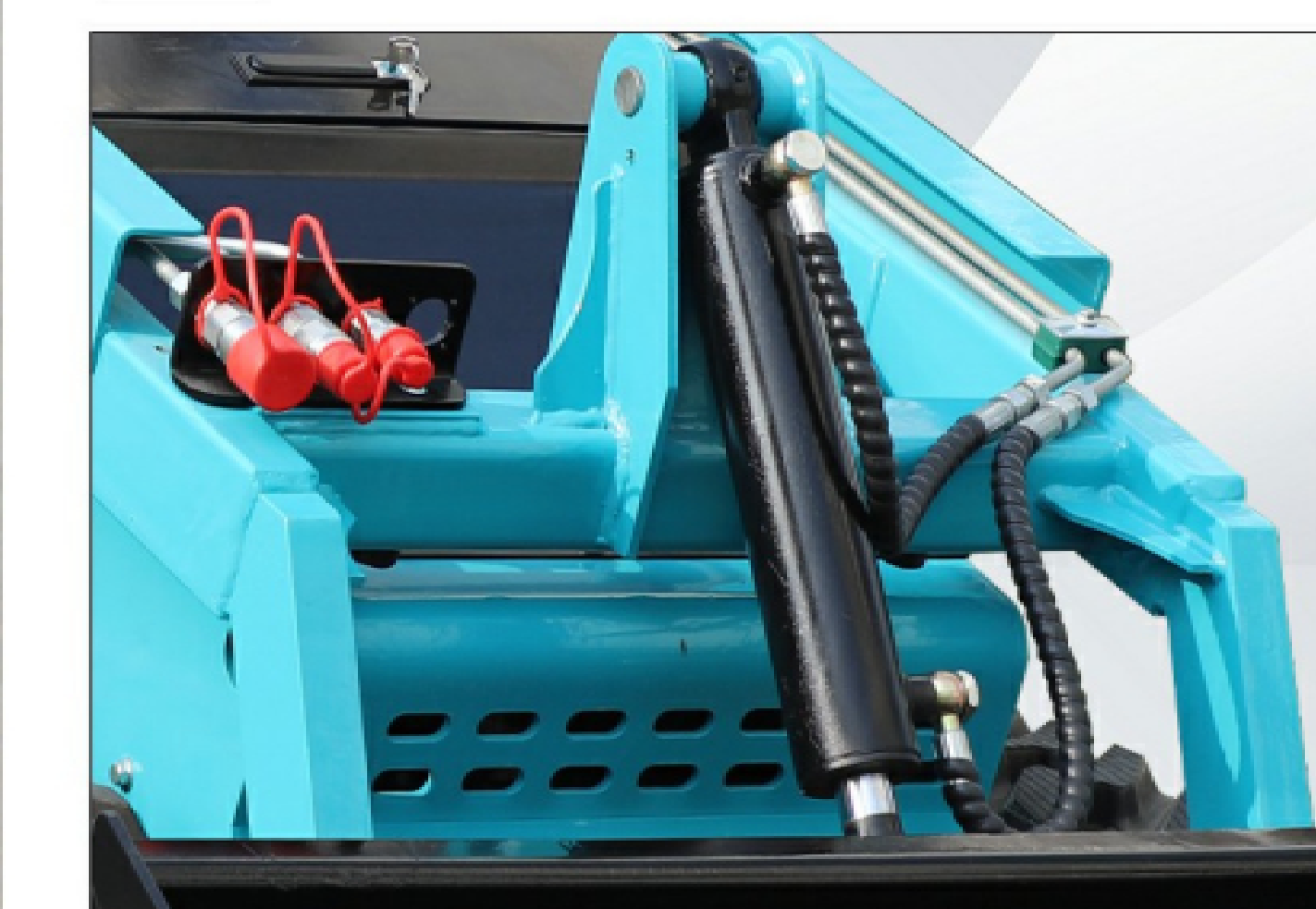
PRODUCT FEATURES

The footrest can be lifted up and has a locking function.
The engine hood is stamped and formed, which is strong and reliable.
The oil circuit layout is reasonable and easy to maintain.
Three machine types: triangular crawler, flat crawler, wheeled.

YF750 SKID STEER LOADER



01 Operating platform



02 High power hydraulic cylinder



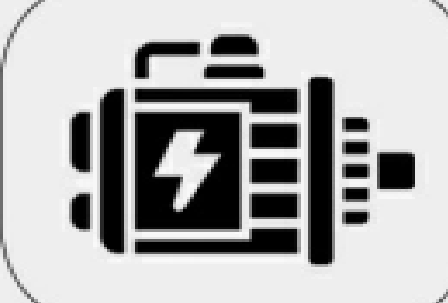
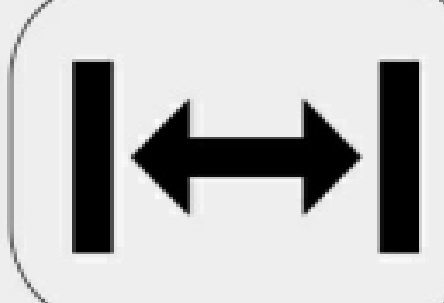


03 Inside the machine

PARAMETER

Engine brand	Electric/Laidong 385/Yanmar 380
Rated power	8kw, 72v, 20ah/18.6/18.4kw
Number of cylinders	3
Aspiration method	Naturally Aspirated
Emission standards	EURO5/EPA
Rated operating capacity	400kg
Maximum operating capacity	450kg
Maximum breakout force	4.5KN
Bucket capacity	0.15m:
Travel speed	0-6km/h
Total cycle time	9s
System operating pressure	25bar
Fuel tank capacity	30L
Operating weight	1200KG
Track type	180*72*45
Vehicle height	1550mm
Length with standard bucket	2700mm

PARAMETER

Vehicle width (standard tires)	970mm
Length without standard bucket	2070mm
Bucket width	1270mm
Tail length	500mm
Maximum reach height	2920mm
Height to bucket pins	2300mm
Maximum height with bucket flat	2140mm
Dump height	1700mm
Dump distance	150mm
Track length on ground	1300mm
Ground clearance	240mm
Tilt angle of bucket on ground	27°
Tilt angle of bucket in highest position	114°

 <p>ELECTRIC LAIDONG 385 YANMAR 380 Engine</p>	 <p>2700*970*1550 Machine size</p>	 <p>1200KG Operating weight</p>	 <p>CUSTOMIZABLE Individuation</p>
--	--	---	--

PRODUCT FEATURES

The YF750 skid steer loader is specially equipped with a chassis that can use the road speed difference and road driving direction to achieve vehicle direction. It can use the road driving mechanical device, total traction, driving direction, and reinstallation to quickly adjust various working configurations and quickly adjust the working content to adapt to different working environments and work contents.

YF1000 SKID STEER LOADER



01 Operating platform



02 Hydraulic cylinder baffle



03 Inside the machine

PARAMETER

Vehicle Weight	1317kg
Vehicle Dimensions	2691*960*1548mm
Maximum Load	650kg
Safe Load	500kg
Bucket Capacity	0.19m ³
Operating Speed	0~4.5km/h
Rated Pressure	19.5mpa
Wheelbase	1026mm
Minimum Vehicle Length (Pedals Retracted, Bucket Removed)	1981mm
Maximum Vehicle Length	2691mm
Ground Clearance	200mm
Departure Angle	29°
Vehicle Height	1548mm
Height from Bucket Pin to Ground	169mm
Bucket Lift Angle	27mm
Dumping Height	1522mm
Maximum Bucket Pin Height from Ground	2140mm

PARAMETER

Max Bucket Height from Ground	2794mm
Bucket Tilting Angle	86°
Dumping Distance	498mm
Bucket Dumping Angle	52°
Track Width	230mm
Bucket Width	1235mm
Frame Width	900mm
Vehicle Width	960mm
Turning Radius	1556mm
Engine	Yanmar 3TNV80F/Kubota D1105
Engine Output	17.8kW/3000rpm/18.5kW/3000rpm
Engine Maximum Torque	60-64N•M/71.5N•M
Engine Displacement	1267CC/1226CC
Engine Fuel Consumption	282g/kW-h/257g/kW-h
Travel Pump Pressure	20MPa
Working Pump Pressure	19.5MPa
Working Pump Flow	48L/min

YANMAR/KUBOTA Engine	2691*960*1548 Machine size	650KG Operating weight	CUSTOMIZABLE Individuation

PRODUCT FEATURES

- 1. EPA and Euro V compliant engines: Yanmar 3TNV80F-SDWB or Kubota D1105-4B-CSL-1. The Italian HANSA hydraulic system utilizes an Italian HANSA closed-loop system.
- 2. The pilot-operated control handle allows for easy, precise, one-handed operation.
- 3. Foam padding: The operator's position is equipped with foam padding for enhanced comfort.
- 4. Water-cooled: The engine is water-cooled, enabling 24-hour operation.

SGL1000 SKID STEER LOADER



01 Operating platform



02 Lumbar cushion



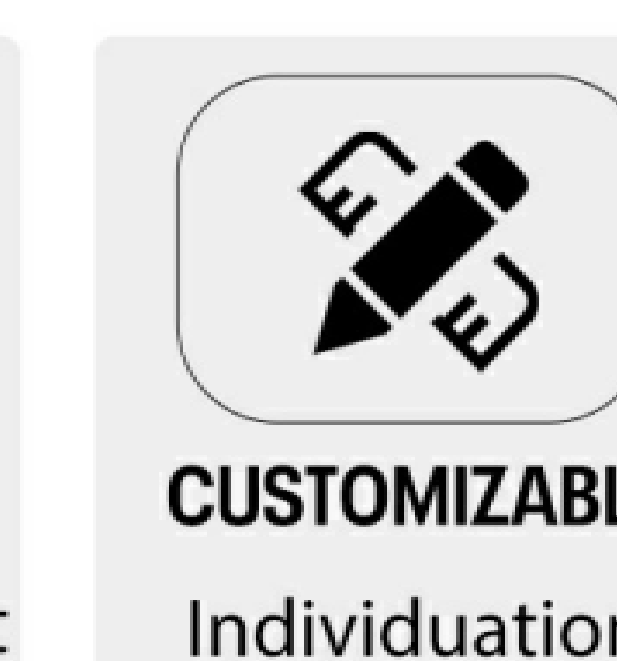
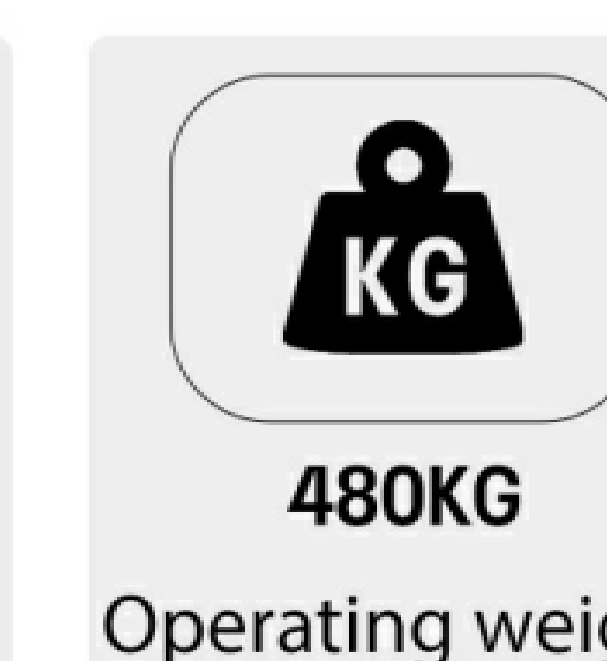
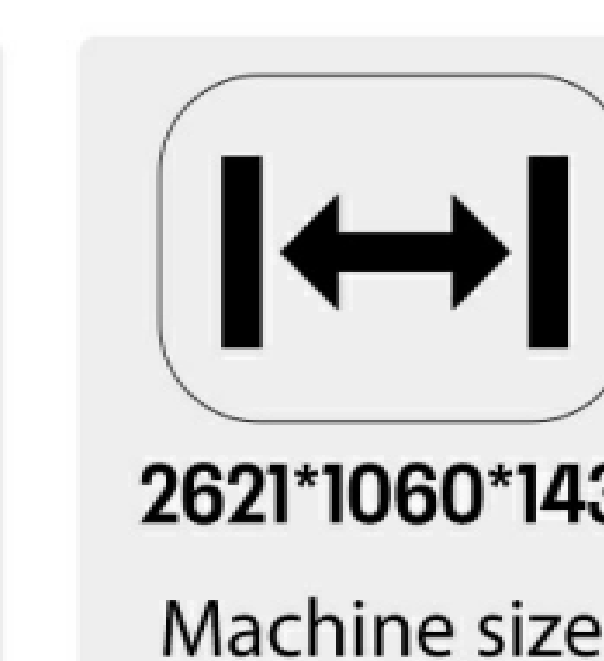
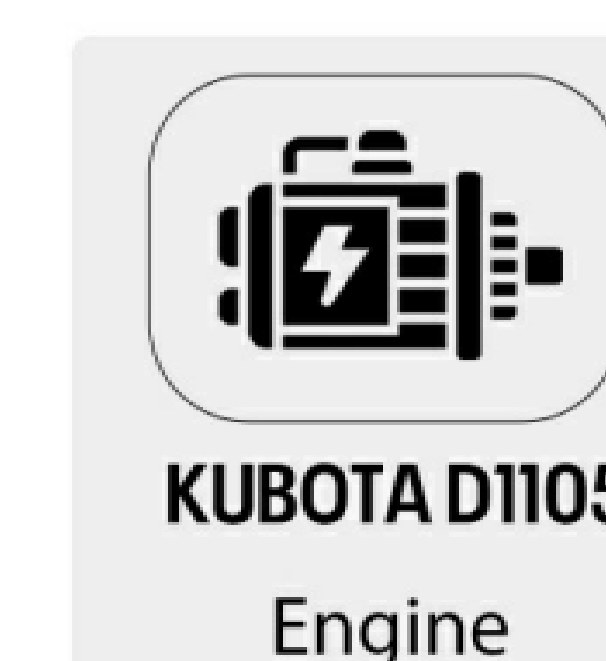
03 Engine

PARAMETER

Machine length (A)	2621mm
Machine length (excluding bucket and pedals) (B)	2010mm
Track length (C)	1300.5mm
Wheel width (D)	871mm
Bucket maximum ground clearance (E)	94mm
Bucket tilt angle to the ground (F)	24°
Bucket maximum tilt distance to the ground (G)	1726mm
Maximum pin height (H)	2219mm
Maximum working height (I)	2927mm
Maximum working angle (I)	94°
Maximum pin limit distance (K)	66mm
Bucket maximum tilt angle (L)	35°
Bucket maximum tilt distance (M)	595mm
Operating platform total height (N)	1438mm
Forward tilt maximum angle (O)	23°
Frame maximum passing height (P)	168mm
Bucket width (O)	1060mm

PARAMETER

Forward turning radius (R)	1455mm
Frame total width including tracks (S)	990mm
Frame total width excluding tracks (T)	912mm
Operating space distance (U)	490mm
Engine rated power	18.2kw,25HP
Engine Speed	3600rpm
Noise	<95Db
Hydraulic system	
Pressure	17MPa
Working time raised	4s
Dumping site	1.3
Workload	480kg
Bucket capacity	0.13m ³
Maximum lifting force	450kg
Travel speed	0-7.9Km/h
Machine weight	1600kg



PRODUCT FEATURES

1. The boom features a sturdy design and a bucket pin height of up to 2220mm (compared to 2100mm for comparable products), allowing loading on high-sided trucks.
2. Available engines include a Perkins 403J-18.5kW (UK) or Kubota D1105-18.5kW (Japan) EPA- and Euro V-certified diesel engine. The hydraulic system utilizes the Italian HANSA closed-loop system, a mainstream feature in international skid-steer loaders. The pilot-operated control handle allows single-handed control of both boom and bucket movement.
3. The boom is equipped with a standard floating function, ensuring it follows the contours of the ground when the sweeper is in use.

YF1000 PRO SKID STEER LOADER



01 Operating platform



02 Double flip design



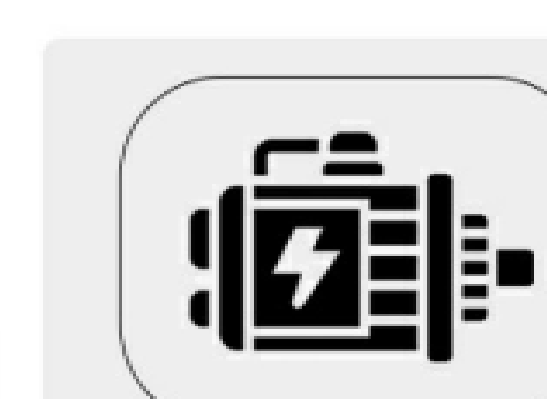
03 Add counterweight

PARAMETER

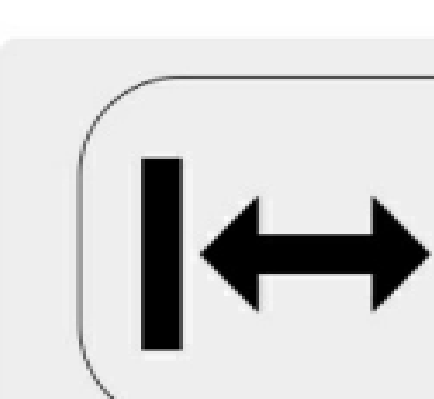
Max working height	2420 mm
Max pin height	2099 mm
Max dump height	1617 mm
The highest point discharge distance	615 mm
Bucket swing angle	79°
Bucket unloading angle	36°
Opening-closing angle	43°
Angle of departure	30°
Total height	1607 mm
The height from the ground	300 mm
Wheelbase	1065 mm
No bucket length	2200 mm
Total width	1033 mm
Bucket width	1140 mm
Total length (L) (with bucket)	2752 mm
Turning radius (R)	2198 mm
Engine	Kubota D1105-EF02

PARAMETER

Rated power	18.2KW/25HP
Rotating speed	3000
Hydraulic pressure	20Mpa
Load weight (kg)	500 Kg
Bucket capacity	0.14 m ³
Max lifting power	1258Kg
speed	0-8Km/h
Operating weight	1445KG
Main pump	Qty: 2+1
Flow of main pump	67.2L/min
Valve	Qty :2
Cycle time (Raise)	3.89s
Cycle time(Dump)	1.6s
Cycle time (lowr)	3.65s



KUBOTA D1105
Engine



2752*1033*1607
Machine size



1450KG
Operating weight



CUSTOMIZABLE
Individuation

PRODUCT FEATURES

- 1. EPA and Euro V compliant engines: Yanmar 3TNV80F-SDWB or Kubota D1105-4B-CSL-1. The Italian HANSA hydraulic system utilizes an Italian HANSA closed-loop system.
- 2. The pilot-operated control handle allows for easy, precise, one-handed operation.
- 3. Foam padding: The operator's position is equipped with foam padding for enhanced comfort.
- 4. Water-cooled: The engine is water-cooled, enabling 24-hour operation.

YF1200 SKID STEER LOADER

PRODUCT FEATURES

- 4-link mechanism, bucket can be raised to maintain balance.
- Equipped with safety support bars for safe protection and convenient maintenance.
- Adding a parking lock device makes the vehicle safer.
- The bucket cylinder is installed with a cover plate for protection.



01 Operating platform



01 Engine compartment



01 One-piece molded cover



KUBOTA D1105 engine



2835*(1140/1035)*1670MM Overall size



1780KG Operating weight



CUSTOMIZABLE individuation

PARAMETER	METRIC
Departure angle:	25°
Carrying position:	191mm
Unloading angle:	45°
Unloading height:	1610mm
Unloading distance:	605mm
Ground clearance:	128mm
Height from the bottom of the pedal:	228mm
Maximum lifting height of the boom:	2155mm
Vehicle height (minimum transport height):	1670mm
Vehicle length (without bucket):	2278mm
Vehicle length (with bucket):	2835mm
Maximum lifting height of bucket:	2719mm
Maximum tilt angle (transport position):	23°
High position rotation angle of bucket	81°
Ground contact length:	1065mm
Turning radius:	1528mm
Vehicle width:	1035mm

PARAMETER	METRIC
Roller center distance:	835mm
Bucket width:	1140mm
Loading mass:	475kg
Tipping capacity:	1100Kg
Vehicle structure weight:	1780Kg
Driving speed:	10km/h
Engine model:	Kubota D1105
Fuel/cooling method	Diesel/Water Cooling
Power:	18.2KW
Maximum speed:	3000rpm
Torque/(2200rpm):	71.5Nm
Number of cylinders:	3pcs
Displacement:	1.1L
Cylinder diameter/stroke:	78/78.4mm/mm
Fuel consumption:	6.1L/h
Lubrication:	Gear Pump Pressure
Track width:	200mm

PARAMETER	METRIC
Structural form:	Triangular roller structure
Working pressure:	0-21Mpa
Capacity	
Cooling system capacity:	5.6L
Fuel tank capacity:	33L
Engine lubricating oil:	5.1
Hydraulic oil tank capacity:	30L
Hydraulic system oil volume:	33L
Main pump type:	
Travel pump flow:	61.6L/min
Travel pump pressure:	21MPa
Working pump flow:	47.6L/min
Working pump pressure:	23MPa

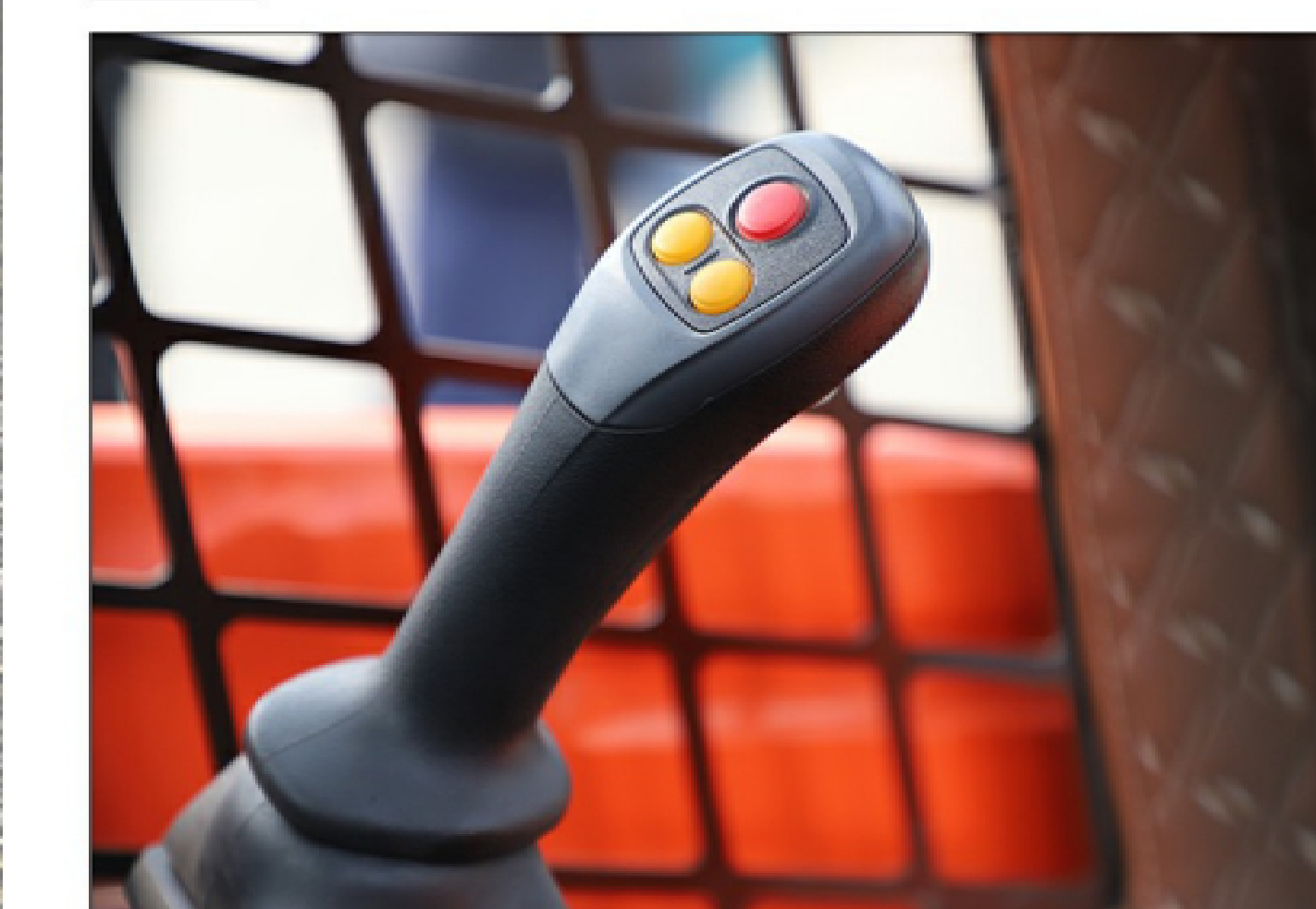
YF25 SKID STEER LOADER



01 Cab



02 Control Panel



03 Pilot operating handle

SPECIFICATIONS

	YF25T	YF25J
Rated operating capacity (kg)	380	380
Tipping load (kg)	760	760
Bucket capacity (m ³)	0.2	0.2
Operational weight (kg)	1500	1260
Max. travel speed (km/h)	12	9
Hydraulic pump flow (L/min)	37	50
Fuel tank capacity (L)	28	28
Tires	200*72*45	Solid tire 560*155
Overall dimensions (mm)	2711×1100×1860	2768*900*1812

DIMENSIONS

Height at maximum extension (mm)	3600	3401
Height to bucket hinge pin (mm)	2470	2477
Width with bucket (mm)	1200	900
Ground clearance (mm)	145	129
Dump angle	40°	40°
Rollback at ground	26°	26°

YF25T

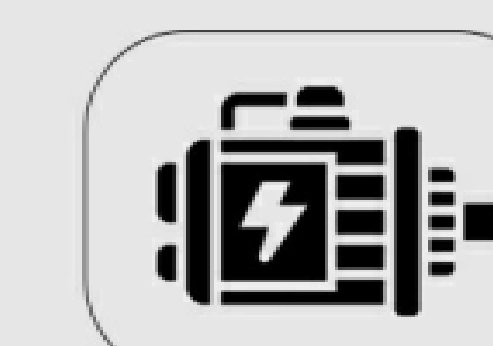
Angle of departure	20°
Track width (mm)	747
Wheelbase (mm)	801
Dumping height (mm)	1990
Maximum reach (mm)	420

ENGINE

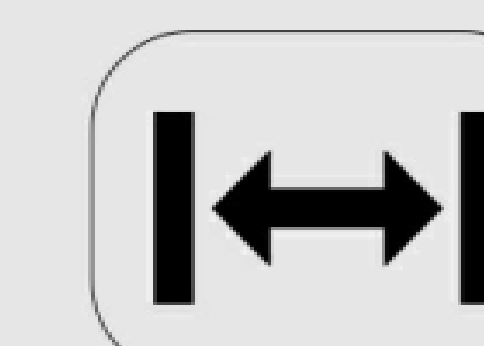
Model	Perkins 404J/18.4KW Kubota/18.2kw/Yanmar 18.7kw
Net power	25hp/3200rpm

STANDARD

Standard bucket
Open-type operator cab
Hydraulic joystick controls
Auxiliary hydraulic couplers



Perkins
Kubota
Yanmar
Engine



2711*1100*1860
2768*900*1812
Machine size



1500KG/1200KG
Operating weight



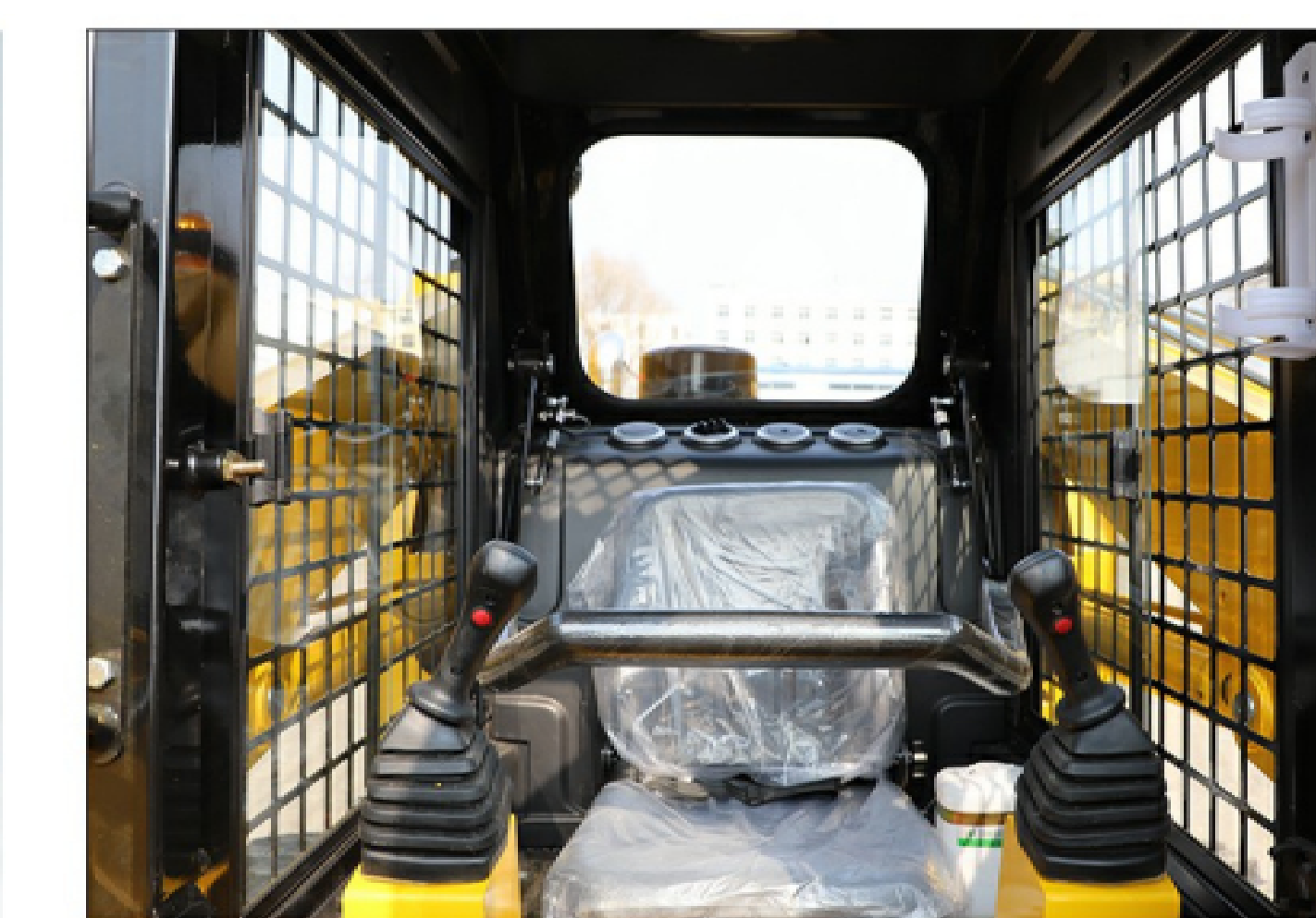
CUSTOMIZABLE
individuation

PRODUCT FEATURES

The YF25 skid-steer loader features a compact design and a narrow chassis width, providing excellent maneuverability. It features a variable-luffing boom, ensuring a strong load capacity despite its narrow width.

The YF25 skid-steer loader utilizes imported European and American hydraulic components. Its controls are all controlled by a pilot servo system, offering sensitive control and quick response, making it an ideal choice for working in confined spaces.

YF45 SKID STEER LOADER



01 Cab



02 Control Panel



03 Pilot operating handle

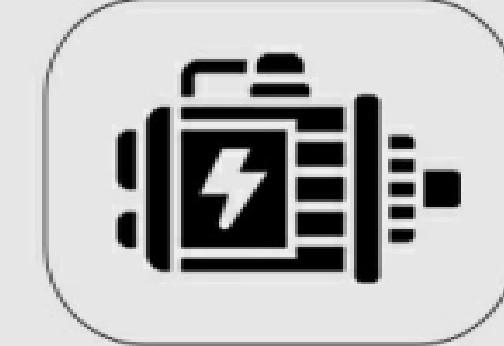
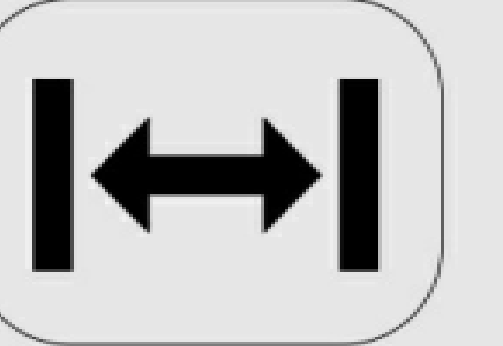


SPECIFICATIONS	YF45T	YF45J
Rated operating capacity (kg)	700	750
Tipping load (kg)		1500
Bucket capacity (m ³)	0.35	0.4
Operational weight (kg)	2800	3200
Max. travel speed (km/h)	8	12
Hydraulic pump flow (L/min)	40	75
Fuel tank capacity (L)	50	80
Tires		10/16.5NHS
Overall dimensions (mm)	2950×1500×2100	3490×1800×2150

DIMENSIONS	YF45T	YF45J
Height at maximum extension (mm)		4000
Height to bucket hinge pin (mm)	2770	3100
Width with bucket (mm)	1500	1800
Track width (mm)	300	1500
Wheelbase (mm)		991
Ground clearance (mm)	180	200

	YF45T	YF45J
Dump angle (mm)		30°
Dumping height (mm)		2400
Approach angle (rollback)		26°
Departure angle (angle)		20°

ENGINE	
YF45T Model	Xinchai C490 BPG (standard)/LS engine from Korea
Net power	50hp/2650rpm
YF45J Model	Kubota 18.2kw/Perkins 403D/18.4kw/Yanmar 18.7kw
Net power	25hp/3200rpm

STANDARD	
	Standard bucket
	Open-type operator cab
	Hydraulic joystick controls
	Auxiliary hydraulic couplers

 Perkins/Kubota Xinchai/Yanmar LS Engine	 2950*1500*1812 3490*1800*2150 Machine size	 2800KG/3200KG Operating weight	 CUSTOMIZABLE individuation
---	---	--	--

PRODUCT FEATURES

- Utilizes imported European and American hydraulic components. All controls utilize a pilot servo system, ensuring sensitive control and rapid response.
- The high-power diesel engine is equipped with a transfer case system, allowing for configuration with a high-power main pump and high-flow gear pump. This allows the main engine to deliver strong traction and high flow output for the attachment system.

YF50 SKID STEER LOADER



01 Cab



02 Radio



03 Pilot operating handle

SPECIFICATIONS

YF50

Rated working load	894kg
Rising force (boom)	1784kg
Lifting force (bucket)	1873kg
Maximum walking speed	10.5km/h
Manufacturer/model	Yanmar/4TNV88
Fuel oil	Diesel
Cooling mode	Water-cooled
Power(SAE J1995)@3000 RPM:	35.5 kW
Twist moment(SAE J1995)@2000 RPM:	140.4 Nm
Cylinder number	4
Displacement	2190 ml
Engine coolant	Propylene glycol/water mixture
Fuel tank	90L
Maximum operating height	3861mm
Height of driving roof (including air conditioning)	2275mm
Departure angle	21°
Ground clearance	186mm

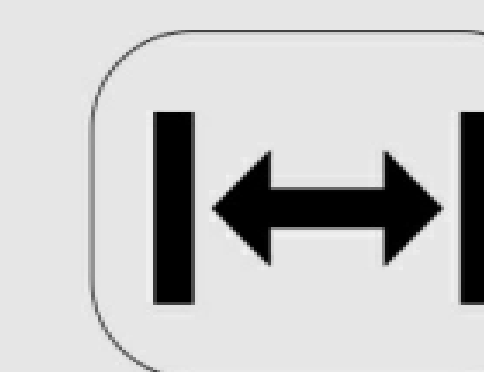
SPECIFICATIONS

YF50

wheelbase	1082mm
Long (without bucket)	2657mm
Operating weight (standard vacuum tire)	2673kg
Hauled weight	2429kg
Walking system pressure	28MP
Maximum capacity of pump	64.4L/min
Long (with standard bucket)	3374mm
Maximum bucket angle of flat ground	24°
Unloading height (with standard bucket)	2301mm
Maximum height of bucket pin	3002mm
Loading distance at maximum unloading height	767mm
Unloading angle at maximum height	43°
Bucket turnover angle at maximum height	94°
Standard bucket width	1727mm
Radius of gyration (with standard bucket)	2048mm
Wheel tread	1375mm
Body width	1633mm



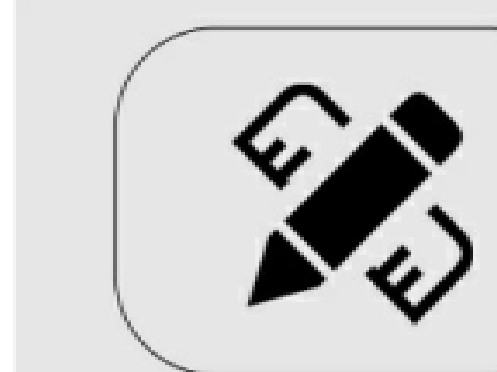
Yangma/4TNV88
Engine



3374*1633*2275
Machine size

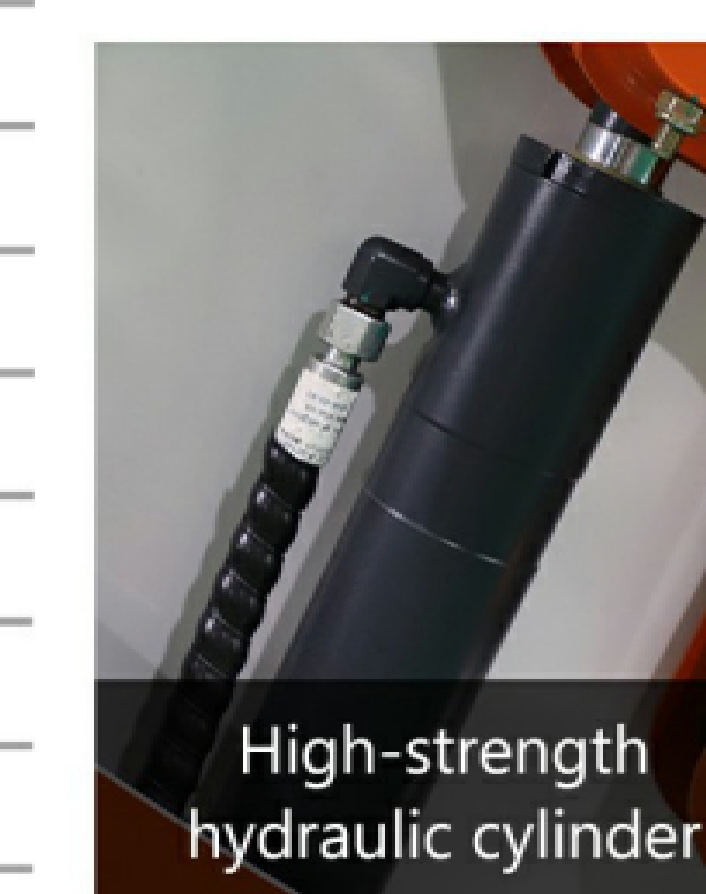


2673KG
Operating weight

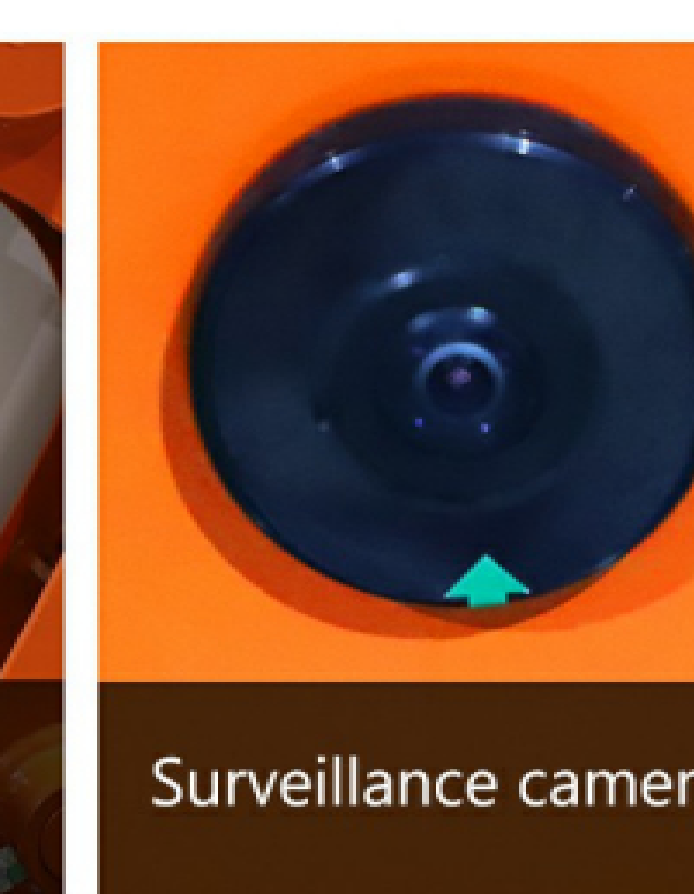


CUSTOMIZABLE
individuation

OTHER DETAILS



High-strength hydraulic cylinder



Surveillance cameras



High-definition display



Air conditioning debugging panel

MINI ROAD ROLLER



**Changchai/Honda
Briggs & Stratton /Koop**
ENGINE



2200*920*1470MM
OVERALL SIZE



1270KG
MACHINE WEIGHT



CUSTOMIZATION
INDIVIDUATION

WALK

Speed	0-8 km/h
Turning radius	2100 mm
Gradeability	30%

COMPACTION

Before/After Static Linear Load	83/72N/cm
Nominal Amplitude	0.5mm
Vibration Frequency	75Hz
Excitation Force	30kN

WORK

Drive type	Hydraulic two-wheel drive
Vibration type	Hydraulic /Front wheel
Steering type	Hydraulic steering
Sprinkler type	Electronic pressure water spray
Water tank material	Rotational molded water tank
Water tank capacity	95L
Hydraulic oil tank capacity	34L
Parking brake	Handbrake

ENGINE

Model	Changchai 192
Type	Diesel engine, air-cooled, 4-stroke
Power	11HP/3600rpm
Fuel tank capacity	5.5L

ENGINE OPTIONAL

Changchai 192/Honda GX390/Briggs & Stratton 25T2/Koop 192
Other engines can be consulted separately

DIMENSIONS

Drum Width (Front and Rear)	800mm
Drum Diameter (Front and Rear)	530mm
Overall Length	2200mm
Overall Width	920mm
Overall Height (No anti-collision beam)	1470mm
Fumigation-free wooden crate packaging	2250*990*1650mm
Steel frame stacking packaging	2280*1000*2560mm

WEIGHT

Net weight	1070kg
Operating weight	1270kg